

VXL250 VECTOR ST



VXL250 VECTOR ST

CONTENTS

PARTS ITEM

01	HEAD COVER	
02	CYLINDER HEAD COMP	
03	CYLINDER ASSY.	
04	L COVER ASSY.	
05	L CRANK CASE	
06	R CRANK CASE	
07	R CASE COVER	
08	MOVABLE DRIVE FACE	
09	CRANK SHAFT	
10	AC GEN FLYWHEEL	
11	BALANCE SHAFT	
12	MISSION CASE	
13	OIL PUMP ASSY.	
14	CYL. HEAD SIDE COVER ASSY.	
15	DRIVEN PULLEY SET	
16	A.I.C.V. ASSY.	
17	CARBURETOR ASSY	
18	GEAR SHAFT LEVER, SAFETY SWITCH	變檔杆，安全開關
19	AIR CLEANER	空氣濾清器
20	CARBURETOR	化油器
21	OIL COOLER	機油冷卻管組
22	ENGINE	引擎
23	MUFFLER	排氣管
24	FRAME	車架
25	FENDER	擋泥板
26	SWING ARM	A 臂，後叉

VXL250 VECTOR ST

CONTENTS

PARTS ITEM

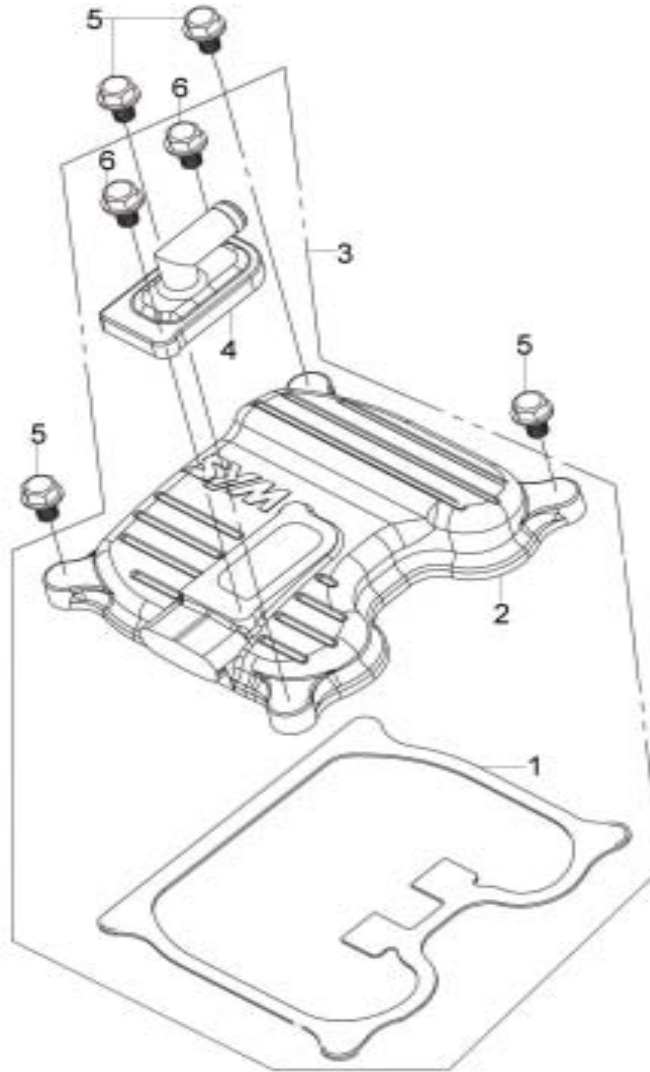
27	SEAT	座墊
28	FUEL TANK	汽油箱
29	SUSPENSION	避震器
30	FRONT WHEEL	前輪
31	REAR WHEEL	後輪
32	FRONT BRAKE SYSTEM	前煞車系統
33	REAR BRAKE SYSTEM	後煞車系統
34	HANDLE BAR	手把
35	BUMPER, FOOTREST	保護杆，置腳踏板
36	REAR WHEEL AXLE	後輪軸
37	STEERING	轉向系統
38	ELECTRICAL EQUIPMENT	電裝品
39	PACKING CASE,EXTERNAL	包裝外箱
40	ACCESSORIES	選配
41	SERVICE KITS,BRAKE CALLIPER	煞車卡鉗小修包

" N " & the gray area: not available

" N/A": This part is not in used for your version

VXL250 VECTOR ST

1. HEAD COVER

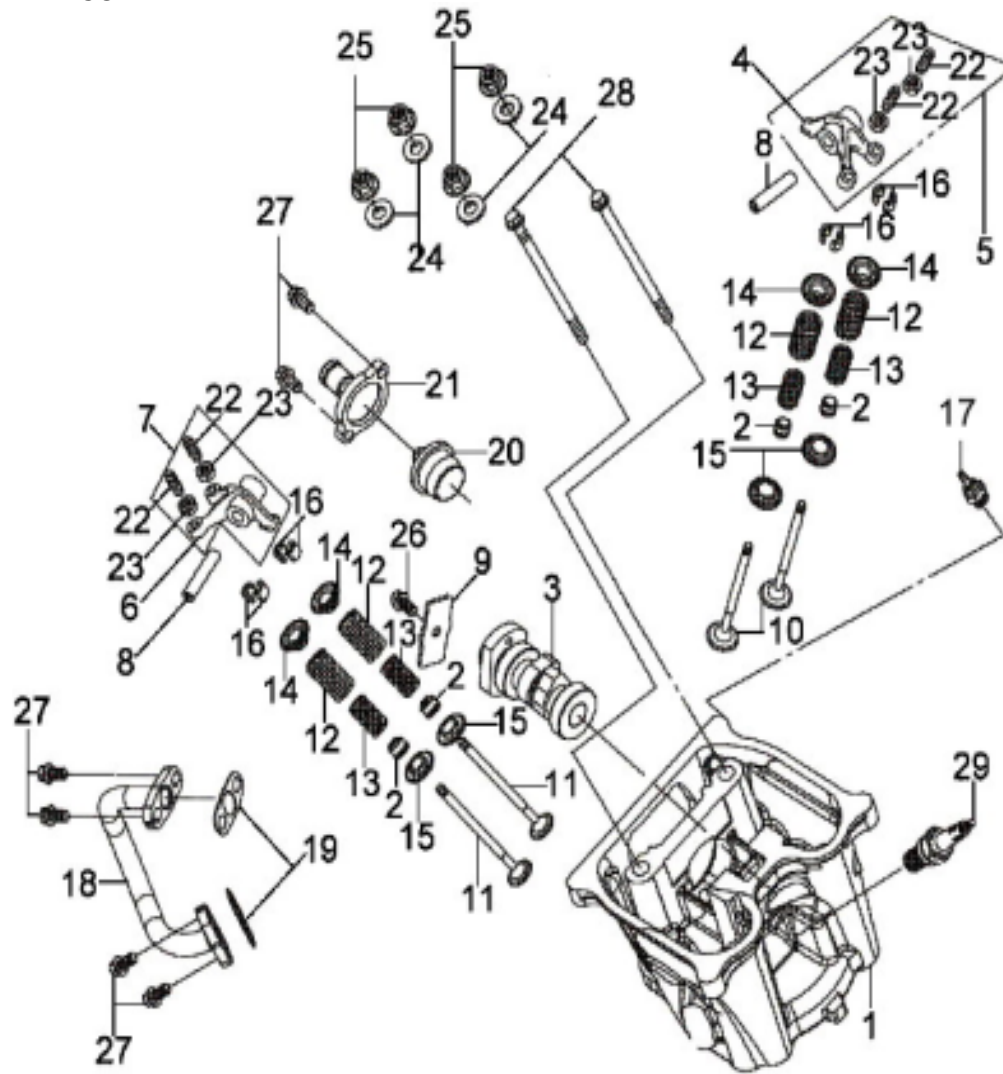


VXL250 VECTOR ST

ITEM	AVAIL	PART NO.	NAME	Q'TY	品名	VIN /ENG NO	E.P	F.R	TORQUE kgf-cm
1			HEAD COVER						
1-1	N	12391-HMA-000	HEAD COVER PACKING	1					
1-2	N	13201-RB1-000	CONNECTING ROD	1					
1-3	N	1320A-RB1-000	CONN. ROD ASSY.	1					
1-4		18610-HKA-000	REED VALVE COMP	1					
1-5		90002-HMA-000	HEAD COVER BOLT	4					
1-6	N	96001-06016-08	FLANGE BOLT 6*16	2					

VXL250 VECTOR ST

2. CYLINDER HEAD COMP

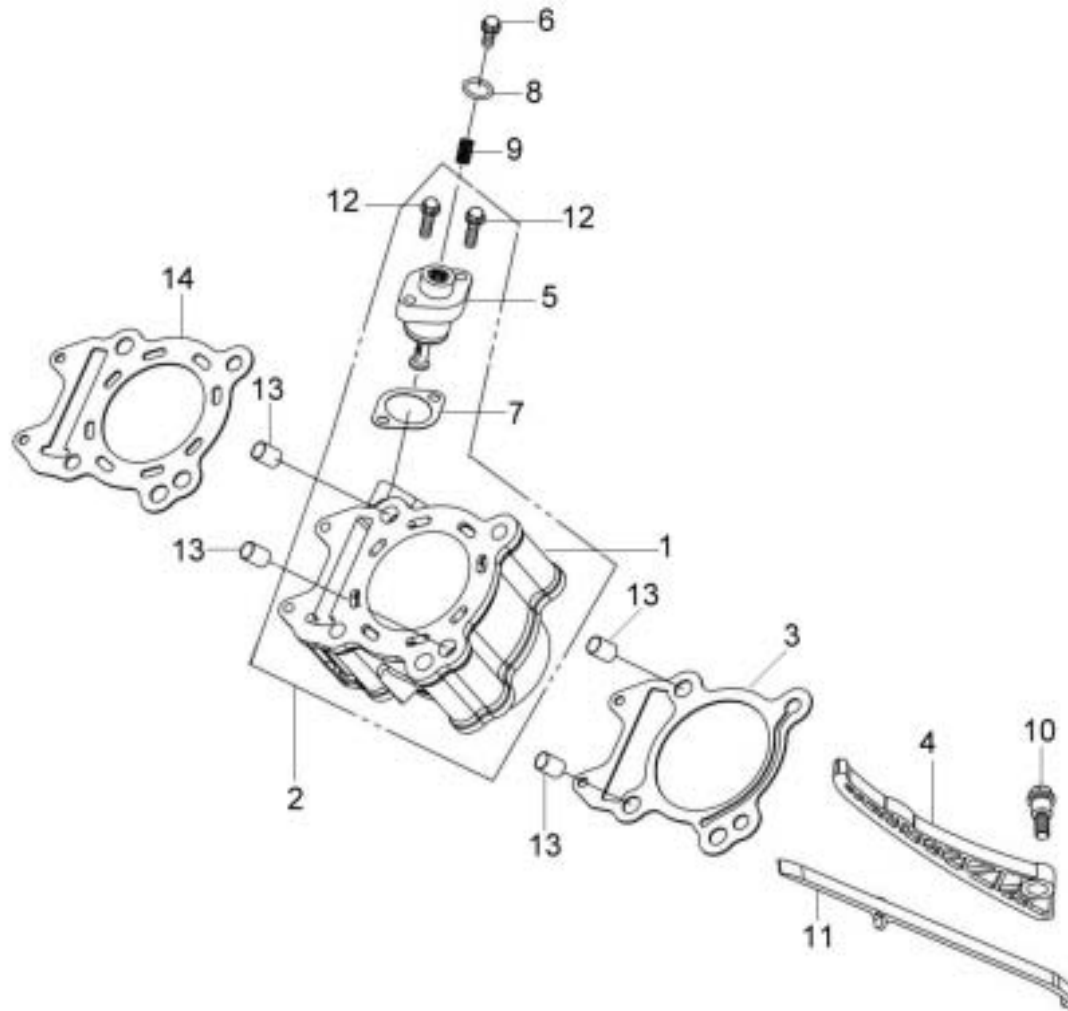


VXL250 VECTOR ST

ITEM	AVAIL	PART NO.	NAME	Q'TY	品名	VIN /ENG NO	E.P	F.R	TORQUE kgf-cm
2			CYLINDER HEAD COMP						
2-1		12200-RB1-000	CYLINDER HEAD COMP	1					
2-2		12209-H6B-000	VALVE STEM SEAL	4					
2-3		14100-RB1-000	CAM SHAFT COMP	1					
2-4	N	14431-RB1-000	IN. VALVE ROCKER ARM	1					
2-5		1443A-RB1-000	IN. VALVE ROCKER ARM ASSY.	1					
2-6	N	14441-RB1-000	EX. VALVE ROCKER ARM	1					
2-7		1444A-RB1-000	EX. VALVE ROCKER ARM ASSY.	1					
2-8		14451-HMA-000	ROCKER ARM SHAFT	2					
2-9		14457-HMA-000	CAM SHAFT SETTING PLATE	1					
2-10		14711-HMA-000	IN. VALVE	2					
2-11		14721-HMA-000	EX. VALVE	2					
2-12		14751-HMA-000	VALVE OUTER SPG.	4					
2-13		14761-HMA-000	VALVE INNER SPG.	4					
2-14		14771-M8Q-000	VALVE SPRING RETAINER	4					
2-15		14777-KN7-670	VALVE SPRING SEAT	4					
2-16		14781-M9Q-000	VALVE COTTER	8					
2-17		37750-PC1-004	THERMO UNIT ASSY	1					
2-18		18647-RB1-000	AIR PIPE COMP	1					
2-19		18654-N14-000	AIR PIPE GASKET	2					
2-20		19300-HMA-000	THERMOSTAT ASSY.	1					
2-21		19315-KJ9-000	THERMOSTAT COVER COMP	1					
2-22	N	90012-HLK-000	TAPPET ADJUSTING SCREW	4					
2-23	N	90206-HLK-000	TAPPET ADJUSTING SCREW NUT	4					
2-24		90442-HMA-000	SEALING WASHER 10.5MM	4					
2-25		94050-10080	FLANGE NUT 10MM	4					
2-26		96001-06014-08	FLANGE BOLT 6*14	1					
2-27		96001-06016-00	FLANGE BOLT SH 6X16	6					
2-28		96001-06090-00	FLANGE SH BOLT 6*90	2					
2-29	N	1PCR8E-3	SPARK PLUG (CR8E)	1					

VXL250 VECTOR ST

3. CYLINDER ASSY.

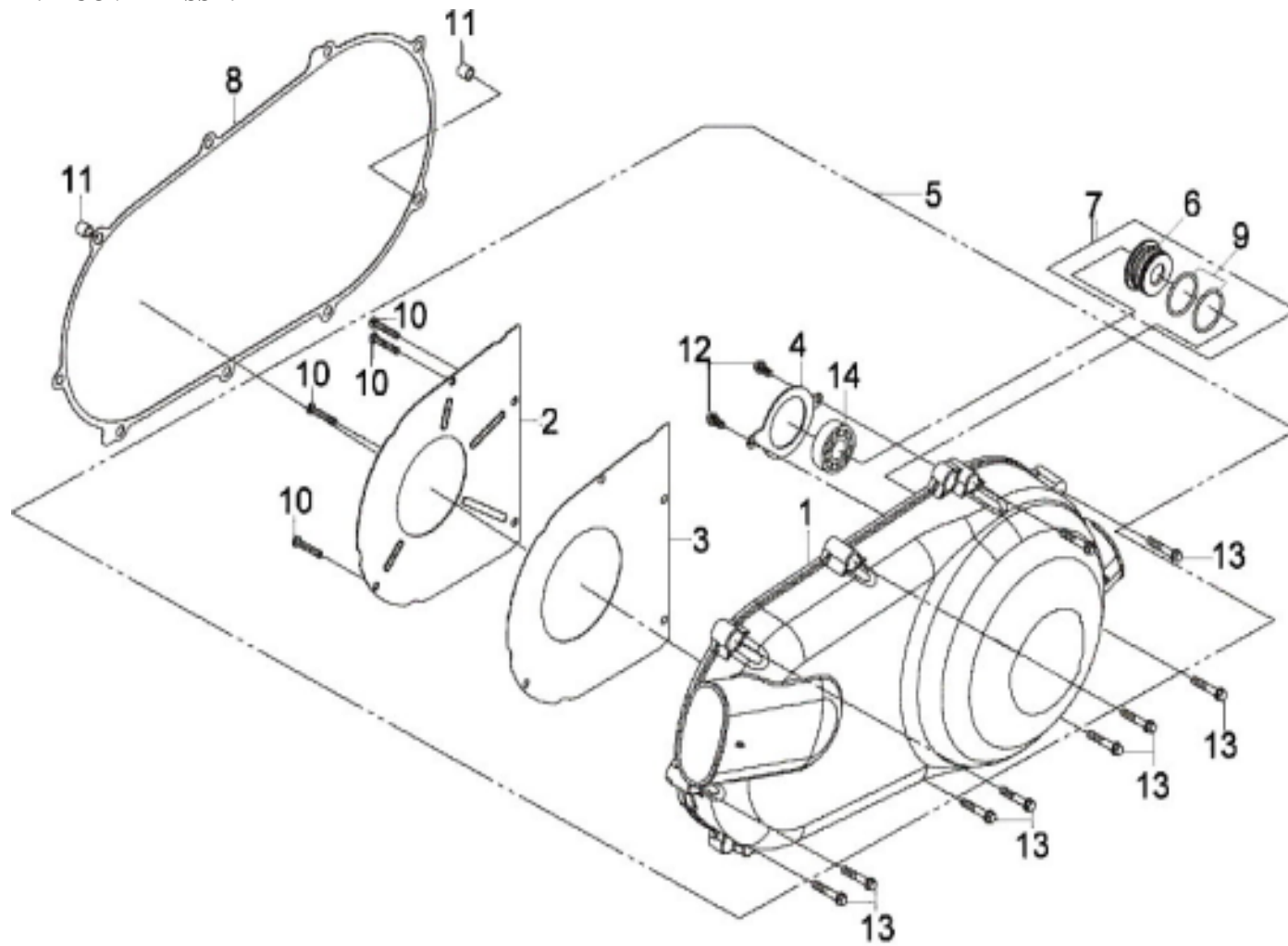


VXL250 VECTOR ST

ITEM	AVAIL	PART NO.	NAME	Q'TY	品名	VIN /ENG NO	E.P	F.R	TORQUE kgf-cm
3			CYLINDER ASSY.						
3-1		12100-HMA-000	CYLINDER COMP	1					
3-2		1210A-HMA-000	CYLINDER ASSY.	1					
3-3		12191-HMA-000	CYLINDER GASKET	1					
3-4		14510-HMA-000	CAM CHAIN TENSIONER	1					
3-5		14520-H6T-000	TENSIONER LIFTER ASSY.	1					
3-6		14522-H6T-000	ADJUSTER BOLT	1					
3-7		14523-M9Q-000	TENSIONER LIFTER GASKET	1					
3-8		14524-H6T-000	O-RING	1					
3-9		14525-H6T-000	ADJUSTER SPRING	1					
3-10		14531-KJ9-000	CAM CHAIN TENSIONERPIVOT	1					
3-11		14610-HMA-000	CAM CHAIN GUIDE	1					
3-12	N	90001-M9Q-000	FLANGE SHF BOLT 6*22	2					
3-13		94301-12200	DOWEL PIN 12*20	4					
3-14		12251-HMA-000	CYLINDER HEAD GASKET	1					

VXL250 VECTOR ST

4. L COVER ASSY.

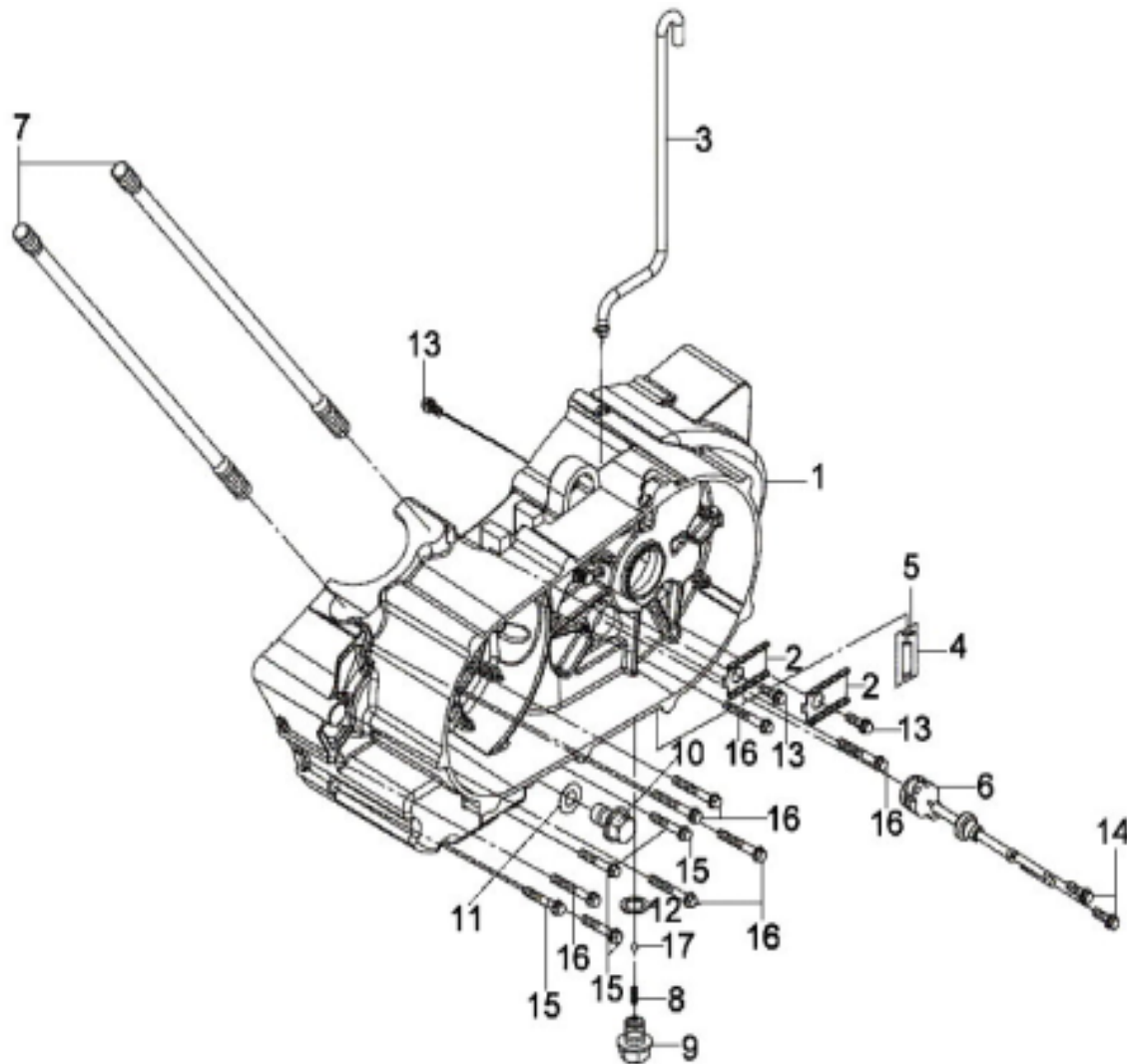


VXL250 VECTOR ST

ITEM	AVAIL	PART NO.	NAME	Q'TY	品名	VIN /ENG NO	E.P	F.R	TORQUE kgf-cm
4			L COVER ASSY.						
4-1	N	11341-RB1-000	L COVER	1					
4-2	N	11342-RB1-000	L. COVER PLATE	1					
4-3	N	11343-RB1-000	L. COVER PLATE GASKET	1					
4-4	N	11346-HMA-000	L. BEARING SETTING PLATE	1					
4-5		1134A-RB1-000	L COVER ASSY.	1					
4-6	N	11371-HMA-000	BERING STAY COLLAR	1					
4-7		1137A-HMA-000	BEARING STAY COLLAR ASSY.	1					
4-8		11395-RB1-000	L COVER GASKET	1					
4-9	N	91303-HMA-000	O-RING 26.5*2.0	2					
4-10	N	93500-05012-0H	PAN SCREW 5*12mm	4					
4-11	N	94301-08140	DOWEL PIN 8*14	2					
4-12		96001-06012-00	SH. FLANGE BOLT 6*12	2					
4-13		96001-06035-00	FLANGE SH BOLT 6X35	9					
4-14	N	96150-60060-10	RADIAL BALL BEARING 6006LLU	1					

VXL250 VECTOR ST

5. L CRANK CASE

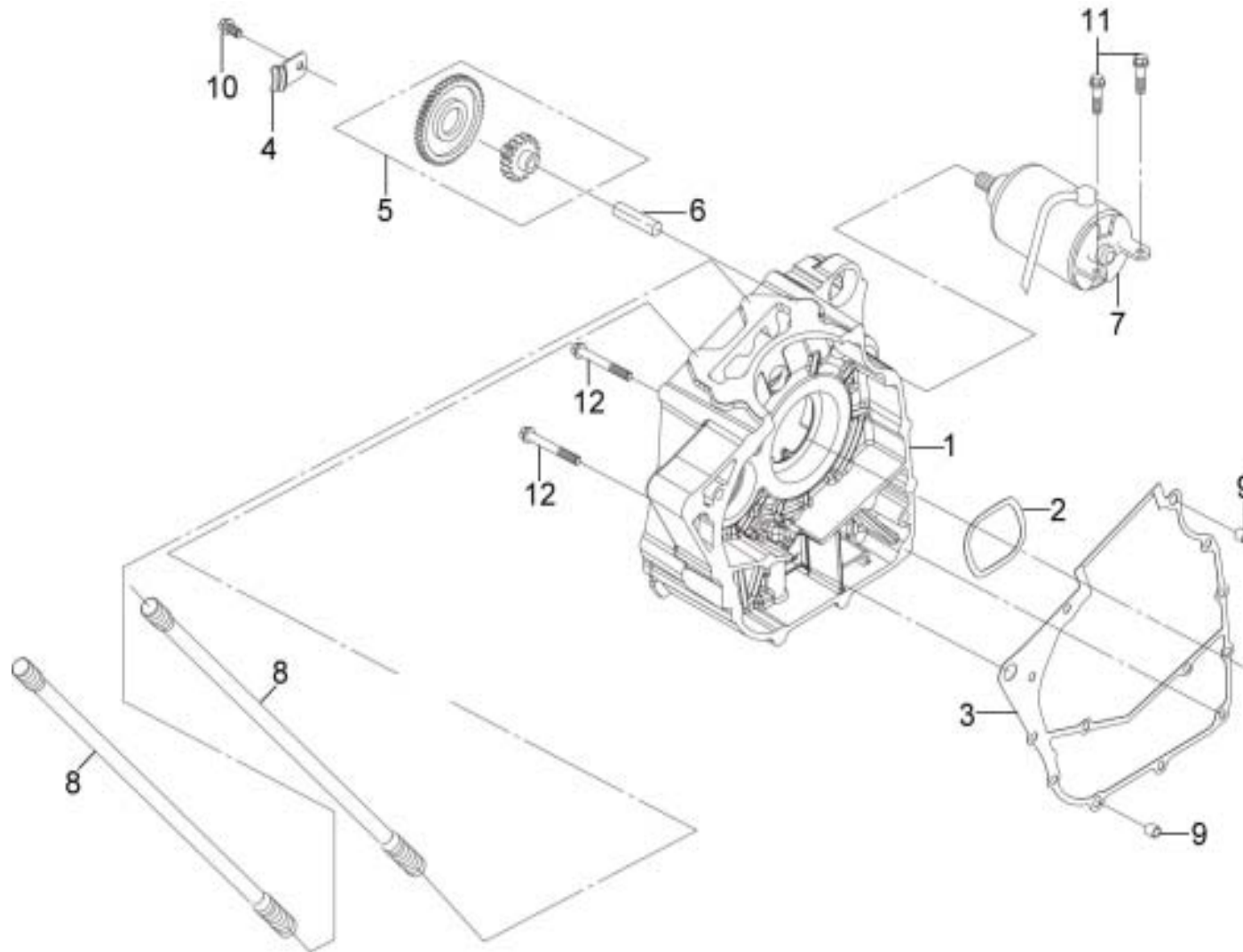


VXL250 VECTOR ST

ITEM	AVAIL	PART NO.	NAME	Q'TY	品名	VIN /ENG NO	E.P	F.R	TORQUE kgf-cm
5			L CRANK CASE						
5-1		11200-RB1-000	L CRANK CASE COMP	1					
5-2		11205-RB1-000	SETTING PLATE	2					
5-3		11221-RB1-000	MISSION BREATHER TUBE	1					
5-4		11230-RA1-000	DRAIN TUBE ASSY.	1					
5-5	N	15772-500-013	TUBE CLIP	1					
5-6		35759-RB1-000	CHANGE SW. ASSY.	1					
5-7		90032-HMA-000	CYLINDER STUD BOLT B	2					
5-8		90051-RB1-000	SPRING FIXED CATCH	1					
5-9		90052-RB1-000	SCREW FIXING	1					
5-10		92800-12000	DRAIN PLUG BOLT 12MM	1					
5-11		94109-12000	DRAIN PLUG WASHER 12MM	1					
5-12		94109-14000	DRAIN PLUG WASHER 14MM	1					
5-13		96001-06012-00	FLANGE BOLT SH 6*12	3					
5-14		96001-06018-00	FLANGE BOLT SH 6*18	2					
5-15		96001-06050-00	FLANGE SH BOLT 6X50	4					
5-16		96001-06070-00	SH. FLANGE BOLT 6*70mm	7					
5-17		96211-12000	STELL BALL 12	1					

VXL250 VECTOR ST

6. R CRANK CASE

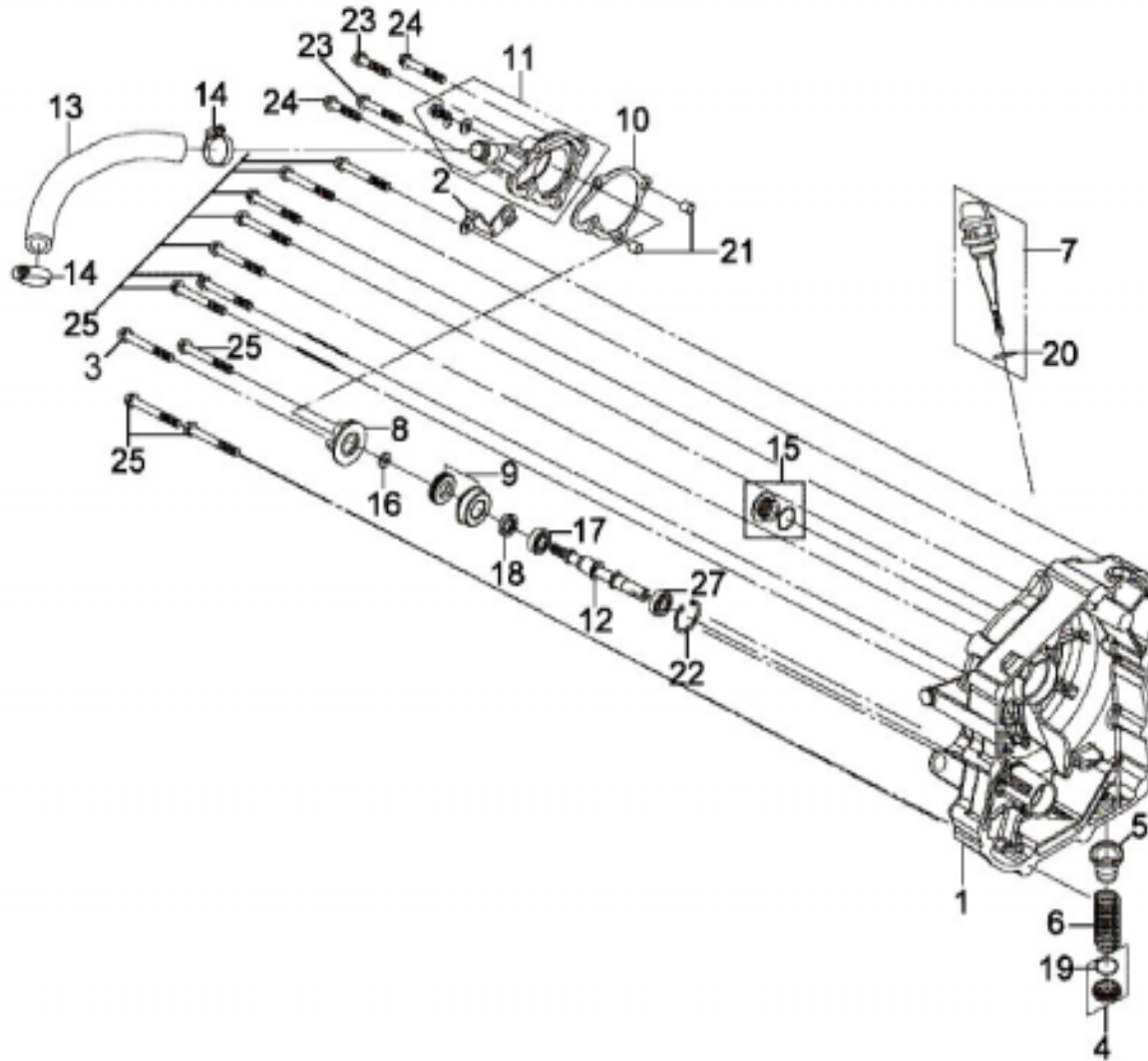


VXL250 VECTOR ST

ITEM	AVAIL	PART NO.	NAME	Q'TY	品名	VIN /ENG NO	E.P	F.R	TORQUE kgf-cm
6			R CRANK CASE						
6-1		11100-RB1-000	R CRANK CASE COMP	1					
6-2		11108-HMA-000	WAVE WASHER	1					
6-3		11191-RB1-000	CRANK CASE GASKET	1					
6-4		14151-HMA-000	CAM CHAIN SETTING PLATE	1					
6-5		28101-RB1-000	STAR. REDUCTION GEAR COMP	1					
6-6		28102-RB1-000	STA. REDUCTION GEAR SHAFT	1					
6-7		31200-RB1-000	START MOTOR ASSY.	1					
6-8		90031-HMA-000	CYLINDER STUD BOLT A	2					
6-9		94301-08140	DOWEL PIN 8*14	2					
6-10		96001-06010-08	FLANGE BOLT SH 6*10	1					
6-11	N	96001-06022-00	FLANGE BOLT SH 6*22	2					
6-12		96001-06055-00	BOLT FLANGE SH 6*55	2					

VXL250 VECTOR ST

7. R CASE COVER

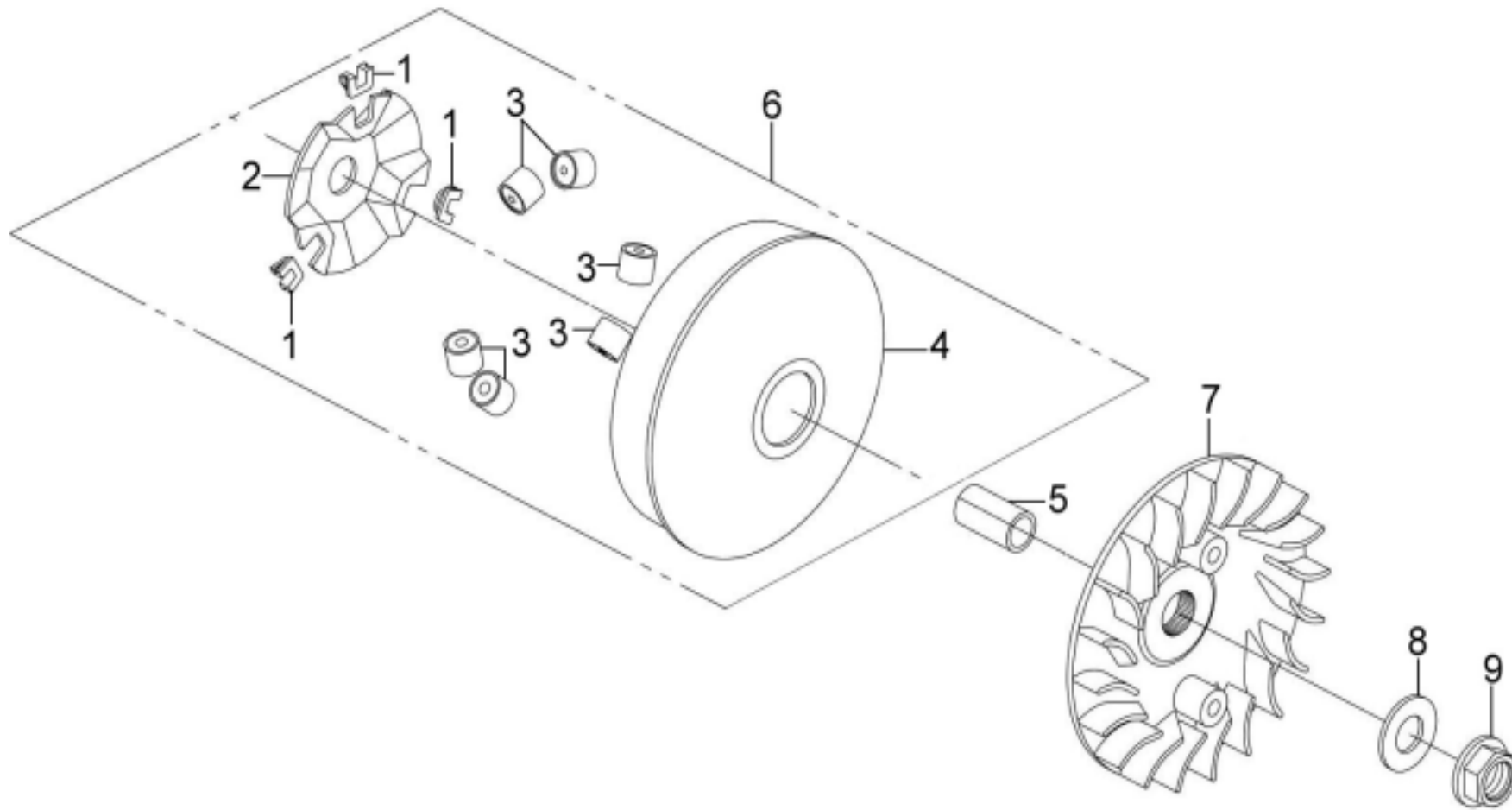


VXL250 VECTOR ST

ITEM	AVAIL	PART NO.	NAME	Q'TY	品名	VIN /ENG NO	E.P	F.R	TORQUE kgf-cm
7			R CASE COVER						
7-1		11330-RB1-000	R CASE COVER COMP	1					
7-2	N	11332-RB1-000	INNER COVER STAY B	1					
7-3		96100-60000-00	RADIAL BALL BRG. 6000	1					
7-4		1236A-V02-000	TAPPET ADJ HOLE CAP ASSY.	1					
7-5		15421-M9Q-000	OIL FILTER SCREEN	1					
7-6		15426-M9Q-000	OIL FILTER SCREW SPG.	1					
7-7		1565A-RB1-000	OIL LEVEL GAUGE ASSY.	1					
7-8		19215-HLA-000	WATER PUMP IMPELLER	1					
7-9		19217-H9A-300	MECHANICAL SEAL	1					
7-10		19229-H9A-000	WATER PUMP GASKET	1					
7-11		1922A-HLA-000	WATER PUMP COVER COMP	1					
7-12		19231-HMA-000	WATER PUMP SHAFT	1					
7-13		19502-RB1-000	WATER HOSE	1					
7-14		19505-KS6-700	WATER HOSE CLAMP A	2					
7-15		9008A-H9A-000	ACG. CAP ASSY. 14MM	1					
7-16	N	90423-KJ9-000	WASHER 7.2*13*1.2	1					
7-17		91001-KJ9-005	RADIAL BALL BRG.6901	1					
7-18		91205-KF0-003	OIL SEAL 12*20*5	1					
7-19	N	91302-M9Q-000	O-RING 30.8MM	1					
7-20	N	91307-M9Q-000	O-RING 18*3	1					
7-21		94301-08140	DOWEL PIN 8*14	2					
7-22	N	94520-26000	CIR CLIP IN 26	1					
7-23		96001-06022-00	FLANGE BOLT SH 6*22	2					
7-24		96001-06032-00	FLANGE SH BOLT 6X32	2					
7-25		96001-06045-00	FLANGE BOLT SH 6*45	10					
7-26		96001-06070-00	SH. FLANGE BOLT 6*70mm	1					

VXL250 VECTOR ST

8. MOVABLE DRIVE FACE

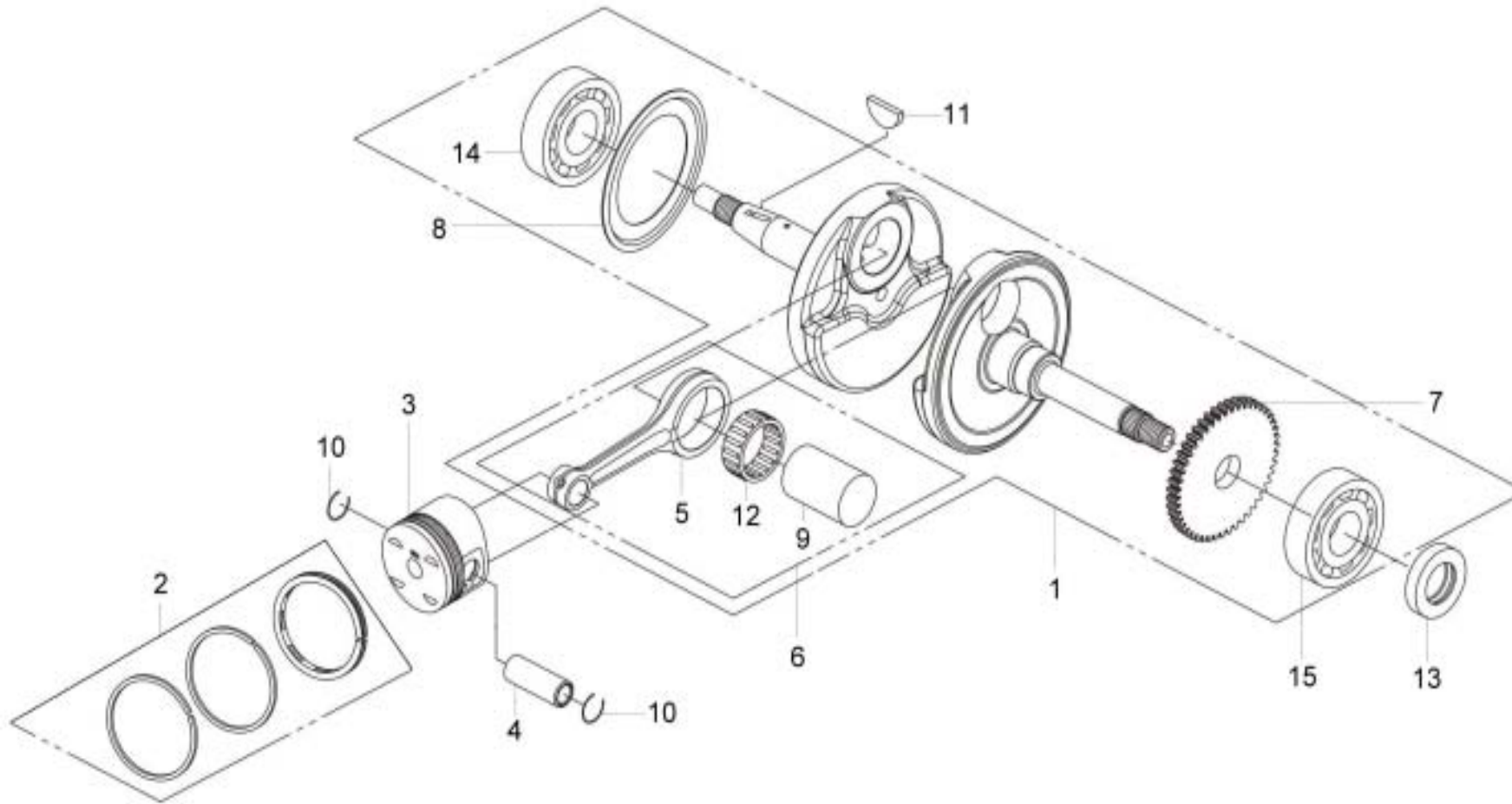


VXL250 VECTOR ST

ITEM	AVAIL	PART NO.	NAME	Q'TY	品名	VIN /ENG NO	E.P	F.R	TORQUE kgf-cm
8			MOVABLE DRIVE FACE						
8-1	N	22132-HMA-000-A	SLIDE PIECE SET	1					
8-2	N	22131-HMA-000	RAMP PLATE	1					
8-3	N	22121-RB1-000-A	WEIGHT ROLLER SET	1					
8-4	N	22110-HMA-000	MOVABLE DRIVE FACE COMP.	1					
8-5	N	22105-HMA-000	DRIVE FACE BOSS	1					
8-6		22000-RB1-000	MOVABLE DRIVE FACE ASSY.	1					
8-7		22102-HMA-000	DRIVE FACE	1					
8-8		90401-KJ9-000	THRUST WASHER 14*28*2	1					
8-9		90201-KR8-751	FLANGE NUT 14MM	1					

VXL250 VECTOR ST

9. CRANK SHAFT

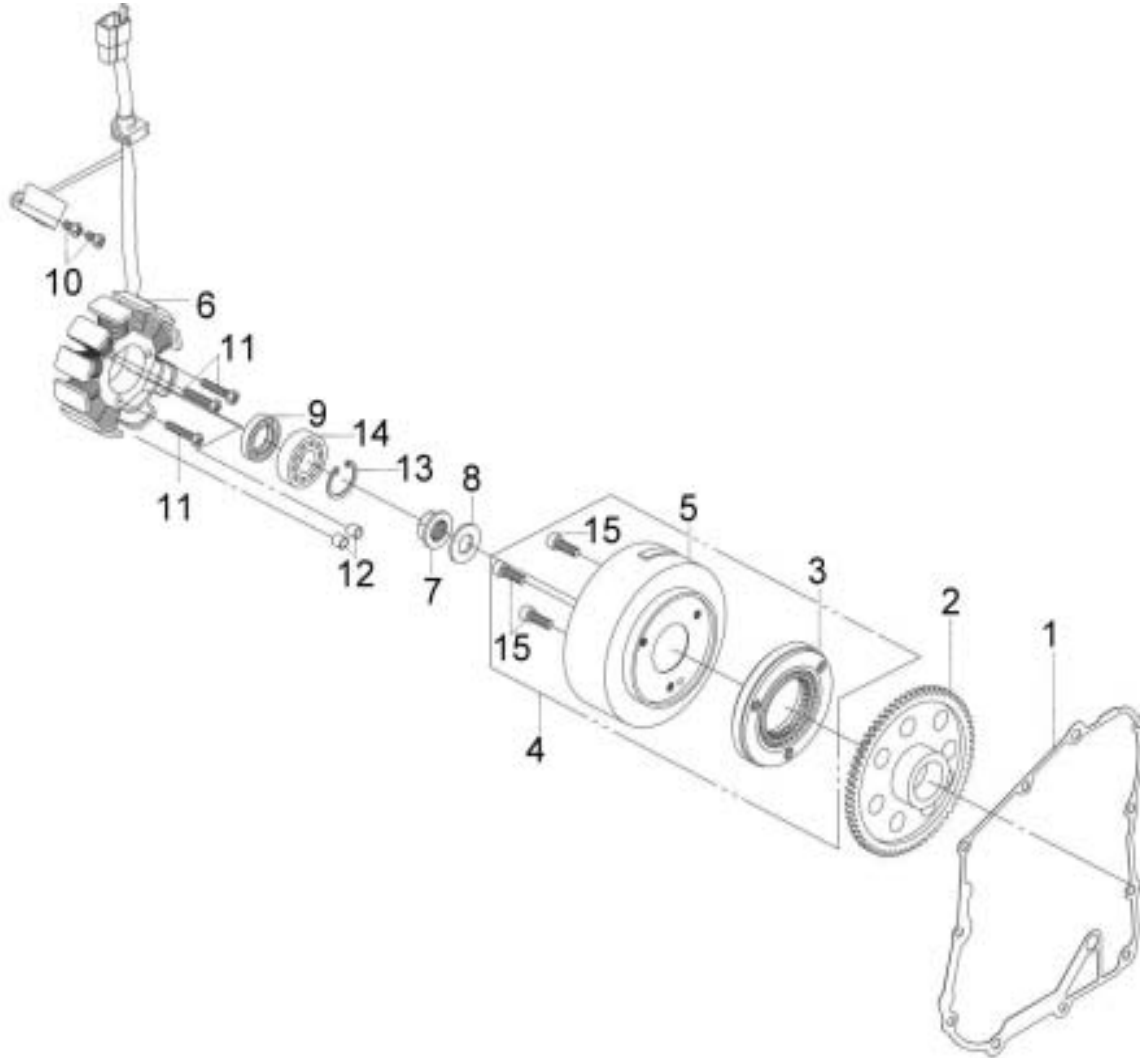


VXL250 VECTOR ST

ITEM	AVAIL	PART NO.	NAME	Q'TY	品名	VIN /ENG NO	E.P	F.R	TORQUE kgf-cm
9			CRANK SHAFT						
9-1		13000-RB1-000	CRANK SHAFT COMP	1					
9-2		13010-HMA-000	PISTON RING SET	1					
9-3	N	13101-RB1-000	PISTON	1					
9-4		13111-HMA-000	PISTON PIN	1					
9-5	N	13201-RB1-000	CONNECTING ROD	1					
9-6	N	1320A-RB1-000	CONN. ROD ASSY.	1					
9-7	N	13331-RB1-300	BALANCE SHAFT DRIVE GEAR	1					
9-8	N	13371-HMA-300	R CRANK SIDE PLATE	1					
9-9	N	13381-HMA-300	CRANK PIN	1					
9-10		90601-HMA-000	PISTON PIN CLIP 17MM	2					
9-11	N	90701-HB6-010	WOODRUFF KEY 25*14*4	1					
9-12	N	91003-HMA-000	CONN. ROD BRG. PK32*41*17.8	1					
9-13		91201-HMA-300	OIL SAEL TC27*42*7	1					
9-14		96100-62070-10	RADIAL BALL BRG. 6207	1					
9-15		91001-HMA-000	RADIAL BALL BRG. TMB306JR2C3	1					

VXL250 VECTOR ST

10 AC GEN FLYWHEEL

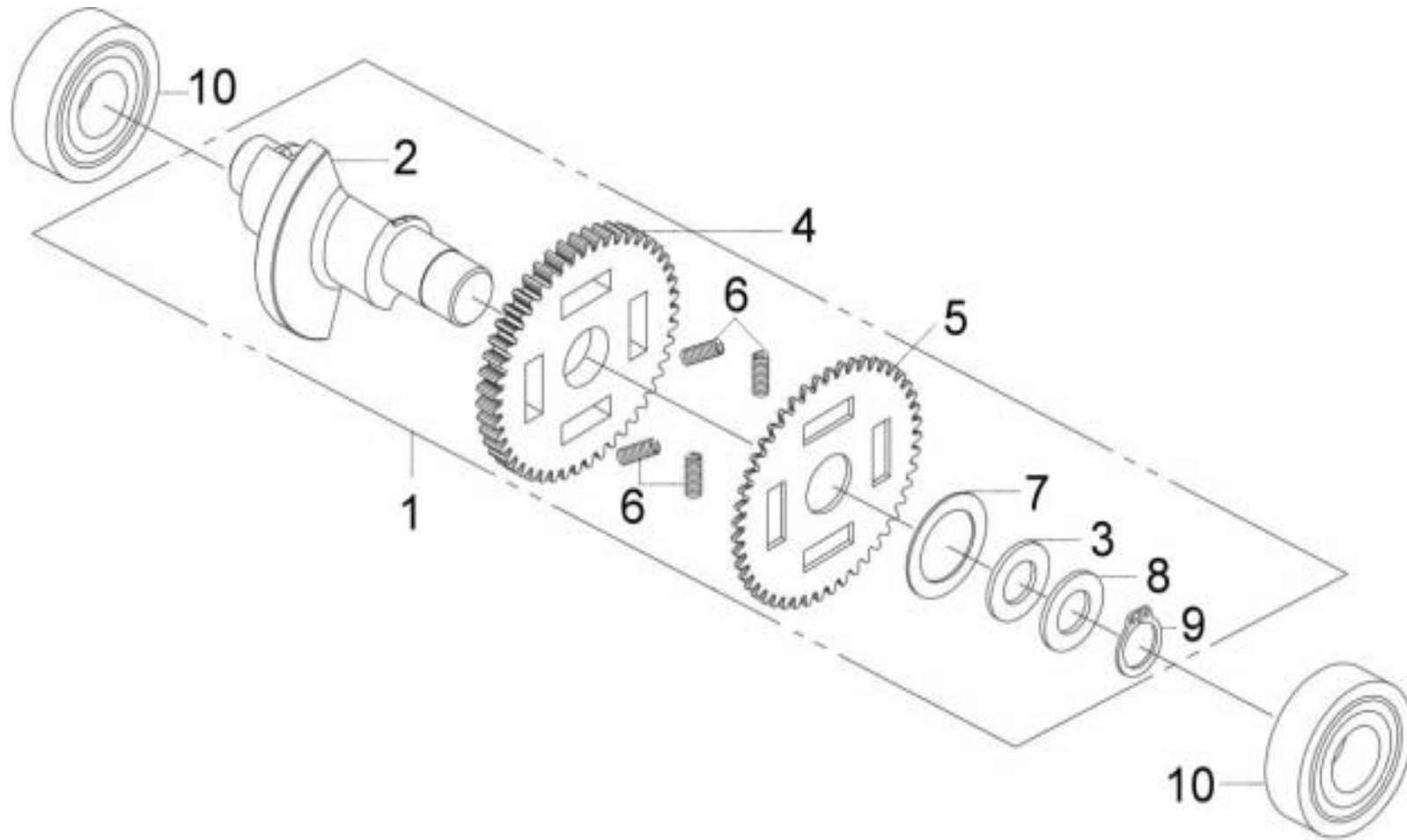


VXL250 VECTOR ST

ITEM	AVAIL	PART NO.	NAME	Q'TY	品名	VIN /ENG NO	E.P	F.R	TORQUE kgf-cm
10			AC GEN FLYWHEEL						
10-1		11394-RB1-000	R COVER GASKET	1					
10-2		28110-HMA-000	STARTING CLUTCH GEAR COMP	1					
10-3		2812A-HMA-000	ONE WAY CLUTCH ASSY.	1					
10-4		3110A-RB1-000	AC GEN FLYWHEEL SET	1					
10-5	N	31110-RB1-000	FLYWHEEL COMP.	1					
10-6		31120-RB1-000	STATOR COMP	1					
10-7		90201-KR8-751	FLANGE NUT 14MM	1					
10-8	N	90401-KJ9-000	THRUST WASHER 14*28*2	1					
10-9		91202-HMA-000	OIL SEAL TC12*22*5	1					
10-10	N	93500-05016-0A	PAN SCREW 5*16	2					
10-11	N	93500-06040-0A	SCREW PAN 6X40	3					
10-12		94301-08140	DOWEL PIN 8X14	2					
10-13	N	94520-32000	IN CIR CLIP 32MM	1					
10-14		96140-62013-10	RADIAL BALL BRG. 6201LUC3	1					
10-15	N	96700-08020-00	SOCKET BOLT 8X20	3					

VXL250 VECTOR ST

11 BALANCE SHAFT

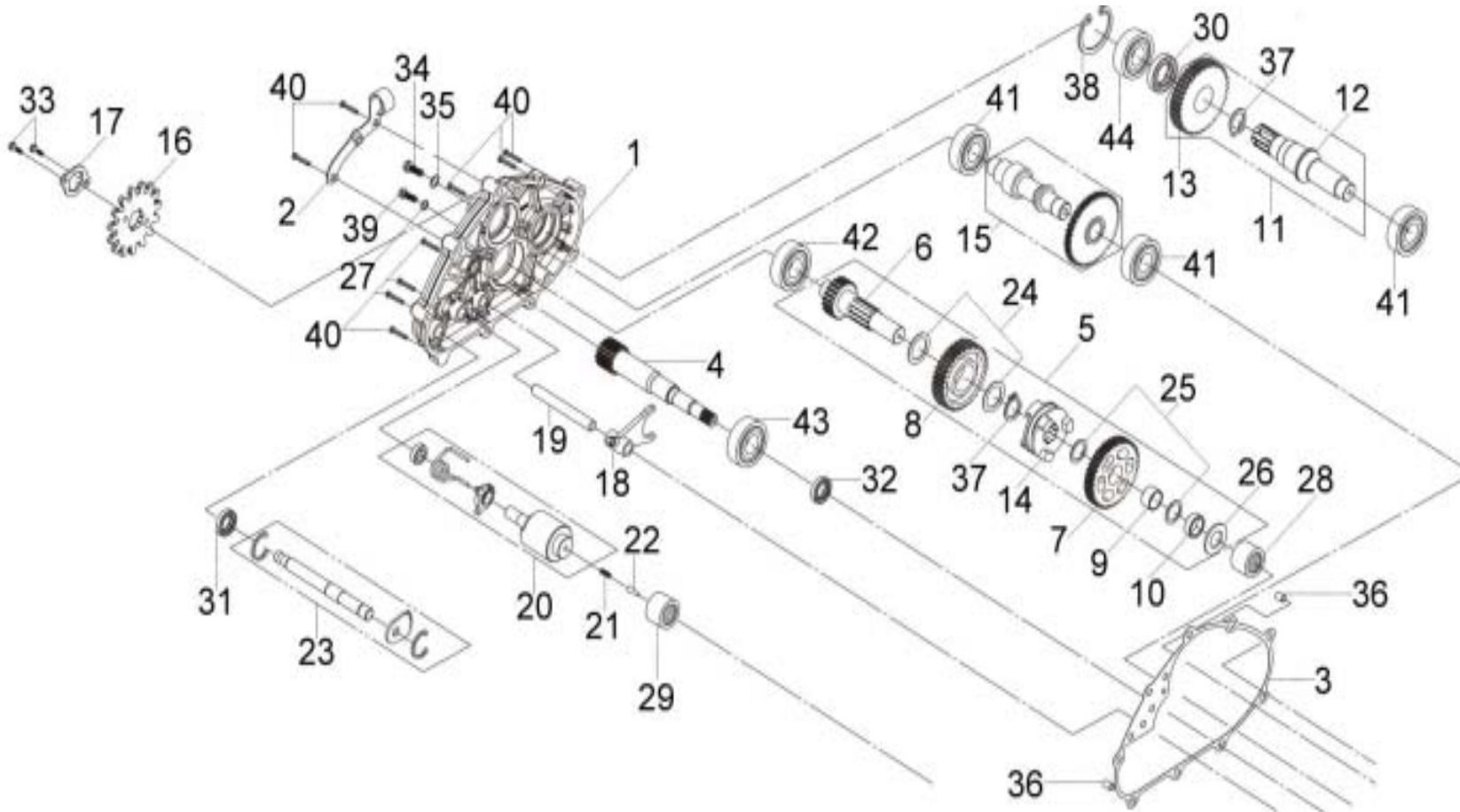


VXL250 VECTOR ST

ITEM	AVAIL	PART NO.	NAME	Q'TY	品名	VIN /ENG NO	E.P	F.R	TORQUE kgf-cm
11			BALANCE SHAFT						
11-1		13300-RB1-000	BALANCE SHAFT COMP	1					
11-2	N	13301-RB1-000	BALANCE SHAFT	1					
11-3	N	13302-RB1-000	WAVE WASHER 28.3*36*1	1					
11-4	N	13332-RB1-300	BALANCE SHAFT DRIVE GEAR A	1					
11-5	N	13333-RB1-000	BALANCE SHAFT DRIVE GEAR B	1					
11-6	N	13334-RB1-000	BALANCE SHAFT DRIVE GEAR SP	1					
11-7	N	13337-RB1-000	WASHER 28.3*47.5*1.4	1					
11-8	N	13338-RB1-000	WASHER 28.3*36*1	1					
11-9	N	94510-28000	CIR CLIP EX 28MM	1					
11-10	N	96100-62040-10	RADIAL BALL BRG. 6204	2					

VXL250 VECTOR ST

12 MISSION CASE



VXL250 VECTOR ST

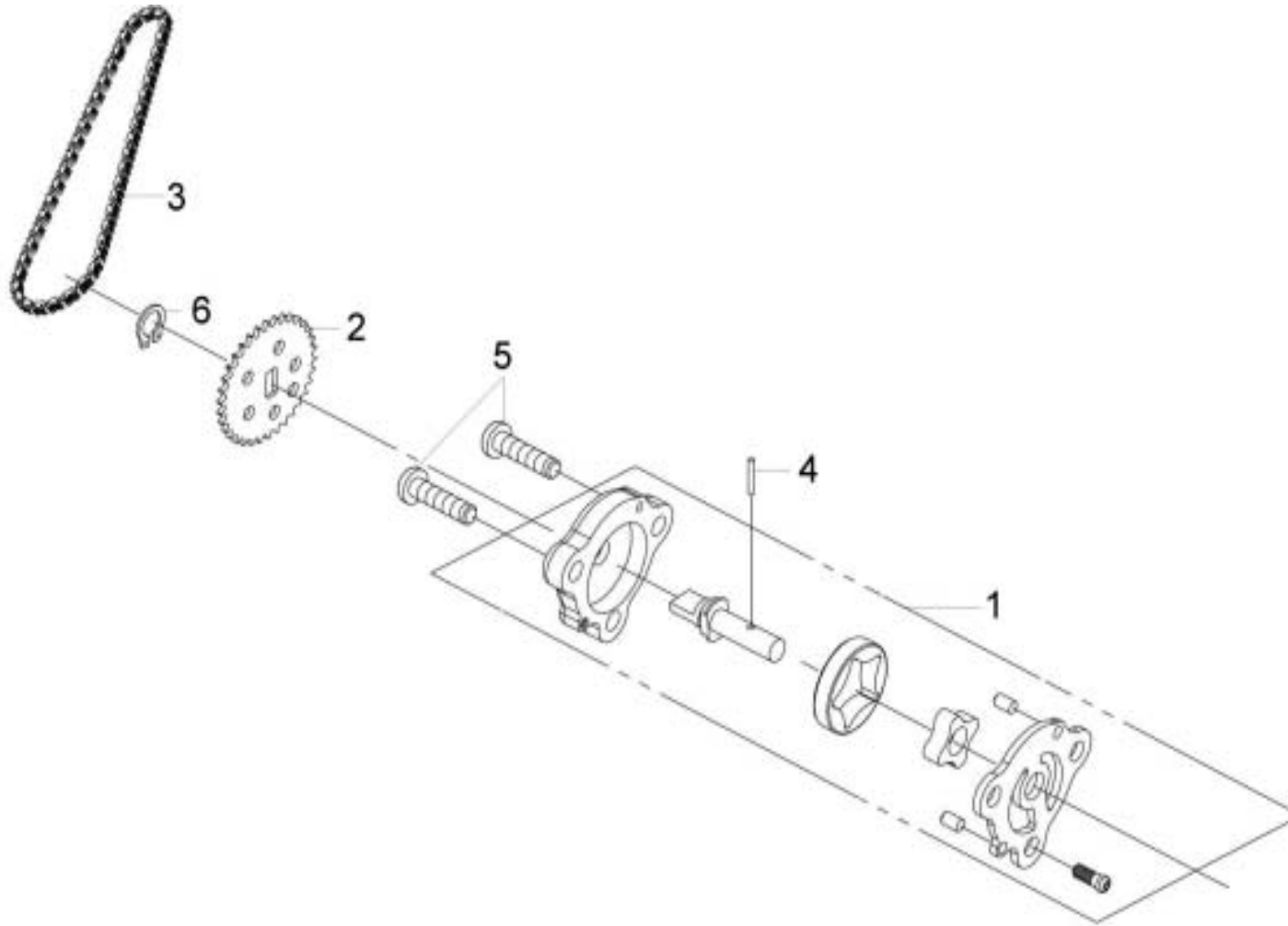
ITEM	AVAIL	PART NO.	NAME	Q'TY	品名	VIN /ENG NO	E.P	F.R	TORQUE kgf-cm
12			MISSION CASE						
12-1		21200-RB1-000	MISSION CASE	1					
12-2		21201-RB1-000	INNER COVER STAY A	1					
12-3		21395-RB1-000	MISSION CASE GASKET	1					
12-4		23411-RB1-000	DRIVE SHAFT	1					
12-5		23420-RB1-000	COUNTER SHAFT ASSY.	1					
12-6		23421-RB1-000	COUNTER SHAFT	1					
12-7		23422-RB1-000	COUNTER GEAR A	1					
12-8		23423-RB1-000	COUNTER GEAR B COMP	1					
12-9	N	23424-RB1-000	BUSH 20*13	1					
12-10	N	23425-RB1-000	SPACER	1					
12-11		23430-RB1-000	FINAL SHAFT COMP	1					
12-12		23431-RB1-300	FINAL SHAFT	1					
12-13		23432-RB1-300	FINAL GEAR	1					
12-14		23475-RB1-000	CLIDING CLAW	1					
12-15		23500-RB1-000	REVERSE SHAFT COMP	1					
12-16		23800-RB1-000	DRIVE SPROCKET	1					
12-17		23801-RB1-000	DRIVE SPROCKET FIXING PLATE	1					
12-18		24211-RB1-000	SHIFT FORK	1					
12-19		24241-RB1-000	SHIFT FIRK SHAFT	1					
12-20		24300-RB1-000	SHIFT DRUM COMP	1					
12-21		24319-R02-000	GEAR INDICATION DRILL SPG	1					
12-22		24323-R02-000	GEAR INDICATION DRILL	1					
12-23		24610-RB1-000	GEAR SHIFT SPINDLE COMP	1					

VXL250 VECTOR ST

ITEM	AVAIL	PART NO.	NAME	Q'TY	品名	VIN /ENG NO	E.P	F.R	TORQUE kgf-cm
12			MISSION CASE						
12-24		90401-RB1-000	PLAIN WASHER 25MM	2					
12-25		90402-RB1-000	PLAIN WASHER 20MM	2					
12-26		90454-RB1-000	THRUST WASHER 20.5*38*2	1					
12-27		90474-M9Q-000	WASHER 8MM	1					
12-28		91003-RB1-000	NEEDLE BRG. HK2016	1					
12-29		91103-X17-000	NEEDLE BRG. K25X29X10	1					
12-30		91201-RB1-000	OIL SEAL TC 30*46*7	1					
12-31		91202-RB1-000	OIL SEAL TC14*26*6	1					
12-32		91204-HMA-000	OIL SEAL TC25*40*7	1					
12-33		92101-06010-0H	HEX BOLT 6*10	2					
12-34	N	92800-12000	DRAIN PLUG BOLT 12MM	1					
12-35		94109-12000	DRAIN PLUG WASHER 12MM	1					
12-36		94301-10140	DOWEL PIN 10X14	2					
12-37		94510-25000	EX. CIRCLIP 25	2					
12-38		94520-52000	CIRCLIP IN. 52	1					
12-39		95701-08012-00	BOLT FLANGE 8*12	1					
12-40		95701-08040-00	FLANGE BOLT 8*40	9					
12-41		96100-62040-10	RADIAL BALL BEARING 6204	3					
12-42		96100-63040-10	RADIAL BALL BRG. 6304	1					
12-43		96100-63053-00	RADIAL BALL BRG. 6305	1					
12-44		96150-62050-10	RADIAL BALL BEARING 6205LLU	1					

VXL250 VECTOR ST

13 OIL PUMP ASSY.

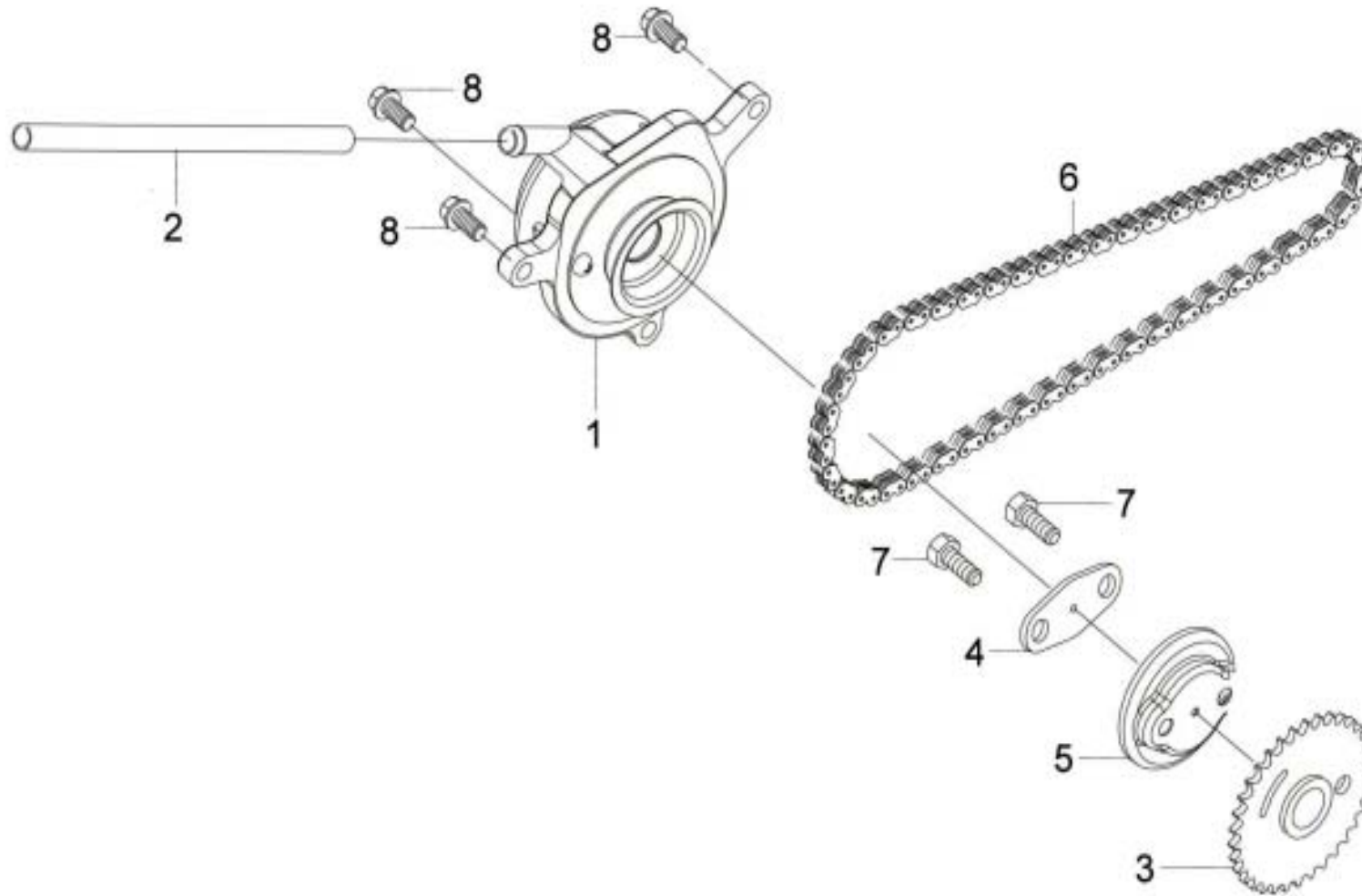


VXL250 VECTOR ST

ITEM	AVAIL	PART NO.	NAME	Q'TY	品名	VIN /ENG NO	E.P	F.R	TORQUE kgf-cm
13			OIL PUMP ASSY.						
13-1		15100-HMA-000	OIL PUMP ASSY.	1					
13-2		15133-HMA-000	OIL PUMP DRIVEN SPROCKET	1					
13-3		15141-HMA-000	OIL PUMP CHAIN 48L	1					
13-4	N	91101-HMA-000	ROLLER 2.5*11.8	1					
13-5		93500-06025-0H	PAN SCREW 6X25	2					
13-6		94510-10000	CIR CLIP EX 10	1					

VXL250 VECTOR ST

14 CYL. HEAD SIDE COVER ASSY.

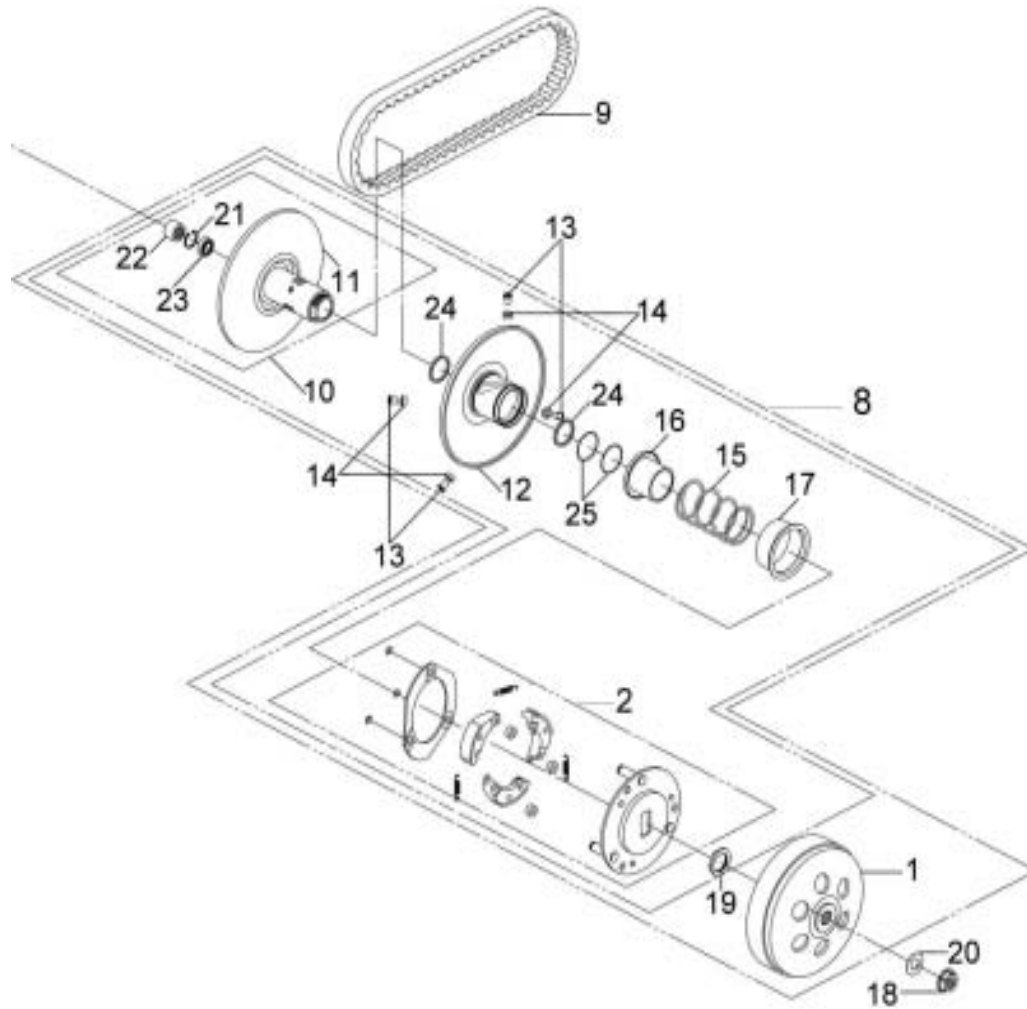


VXL250 VECTOR ST

ITEM	AVAIL	PART NO.	NAME	Q'TY	品名	VIN /ENG NO	E.P	F.R	TORQUE kgf-cm
14			CYL. HEAD SIDE COVER ASSY.						
14-1		1230A-RB1-000	CYL. HEAD SIDE COVER ASSY.	1					
14-2		12314-RB1-000	BREATHER TUBE	1					
14-3		14105-A31-000	CAM SPROCKET	1					
14-4		14105-X01-000	CAM SPROCKET WASHER	1					
14-5		14108-M36-000	CENTRIFUGAL DISK	1					
14-6		1C14401-HMA-000	CAM CHAIN 100L	1					
14-7		90083-X01-000	LOCK BOLT 6MM	2					
14-8		96001-06018-00	FLANGE BOLT ,SH 6*18	3					

VXL250 VECTOR ST

15 DRIVEN PULLEY SET

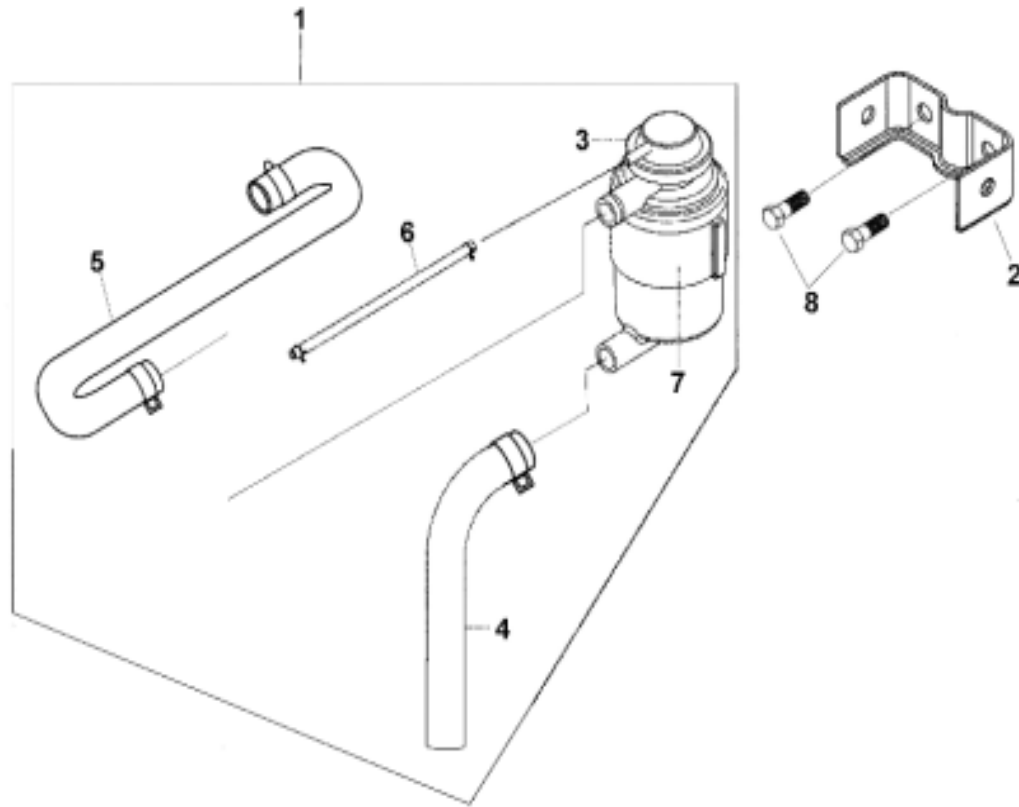


VXL250 VECTOR ST

ITEM	AVAIL	PART NO.	NAME	Q'TY	品名	VIN /ENG NO	E.P	F.R	TORQUE kgf-cm
15			DRIVEN PULLEY SET						
15-1		22101-HMA-000	CLUTCH OUTER	1					
15-2		22300-RB1-000	DRIVE PLATE ASSY.	1					
15-3		2301A-RB1-000	DRIVEN PULLEY ASSY	1					
15-4	N	1B01RB101	DRIVE BELT	1					
15-5	N	23200-HMA-000	DRIVEN FACE ASSY.	1					
15-6	N	23210-HMA-000	DRIVEN FACE COMP.	1					
15-7	N	23220-HMA-000	MOVABLE DRIVEN FACE COMP.	1					
15-8	N	23225-HMA-000	ROLLER GUIDE PIN	4					
15-9	N	23226-HMA-000	GUIDE ROLLER	4					
15-10	N	23233-HMA-000	DRIVEN FACE SPRING	1					
15-11	N	23237-HMA-000	SEAL COLLAR	1					
15-12	N	23238-HMA-000	SPRING COLLER	1					
15-13	N	90201-KR8-751	FLANGE NUT 14MM	1					
15-14	N	90202-HMA-000	SPECIAL NUT 36MM	1					
15-15		90401-KJ9-000	THRUST WASHER 14*28*2	1					
15-16	N	90602-HMA-000	IN. CIRCLIP	1					
15-17	N	91006-HMA-300	NEEDLE BREAING HKS25*32*14	1					
15-18	N	91007-HMA-300	RADIAL BALL BRG. 6903LU	1					
15-19	N	91211-HMA-000	OIL SEAL TC41*48*4	2					
15-20	N	91305-HMA-000	O-RING 47*2.0	2					

VXL250 VECTOR ST

16 A.I.C.V. ASSY.

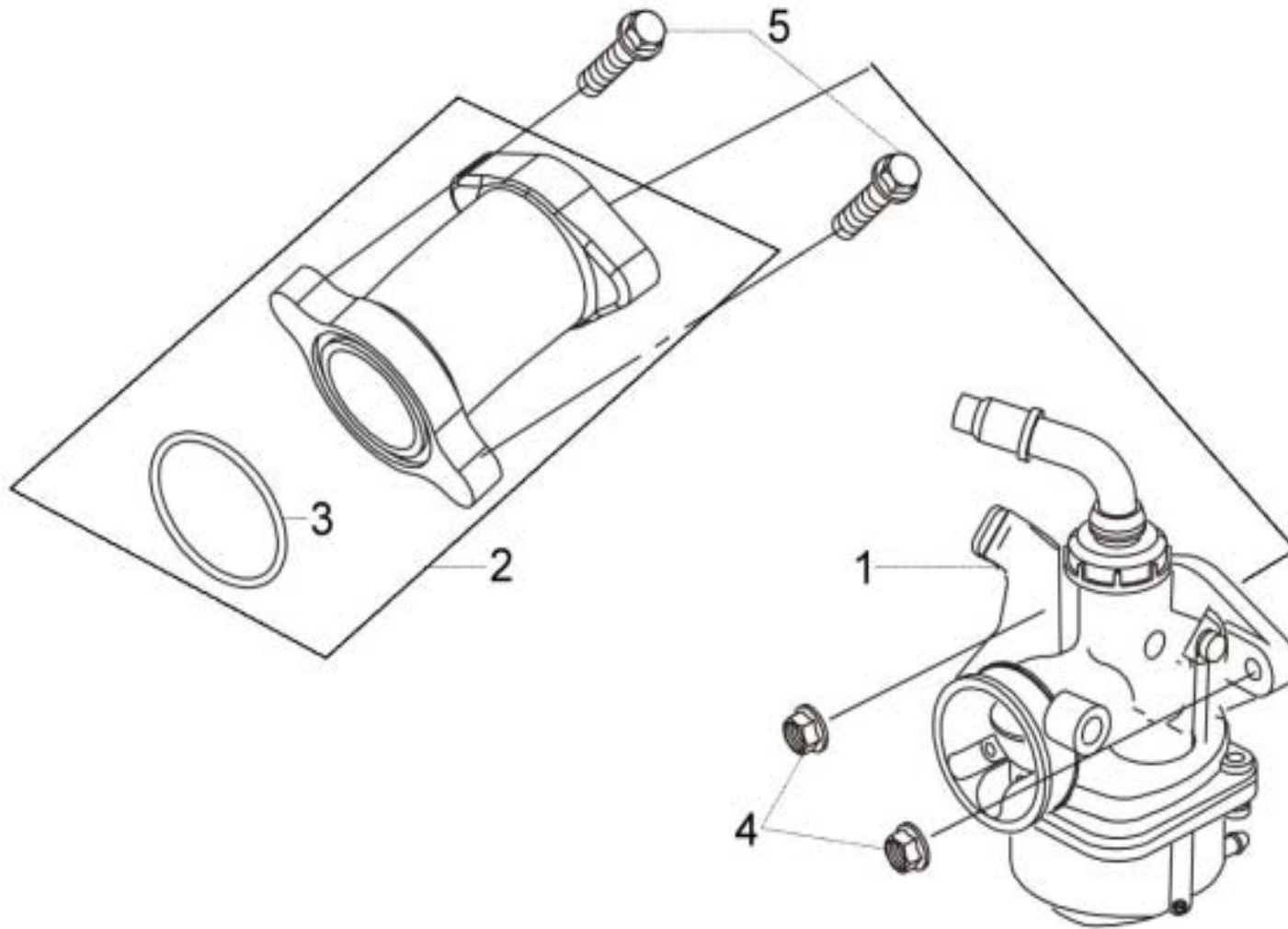


VXL250 VECTOR ST

ITEM	AVAIL	PART NO.	NAME	Q'TY	品名	VIN /ENG NO	E.P	F.R	TORQUE kgf-cm
16			A.I.C.V. ASSY.						
16-1		1865A-RB2-0000P	AICV ASSY	1	AICV 總成				
16-2		A7401-LRA0-0000	STAY AICV	1	AICV固定座				
16-3		18650-HMA-000	AICV	1	AICV				
16-4		A8655-LRA0-0000	AICV JOINT TUBE	1	通氣管				
16-5		A8656-LRA0-0000	AICV-REED VALVE JOINT TUBE	1	連接管				
16-6		18657-RB1-000	A.I.C.V. INLET PIPE JOINT TUBE ASSY.	1					
16-7		18811-N14-000	A.I.A.C SETTING BAND	1					
16-8		I0149-06012	BOLT, FLANGE (M6x12)	2	凸緣螺栓 (M6x12)				

VXL250 VECTOR ST

17 CARBURETOR ASSY

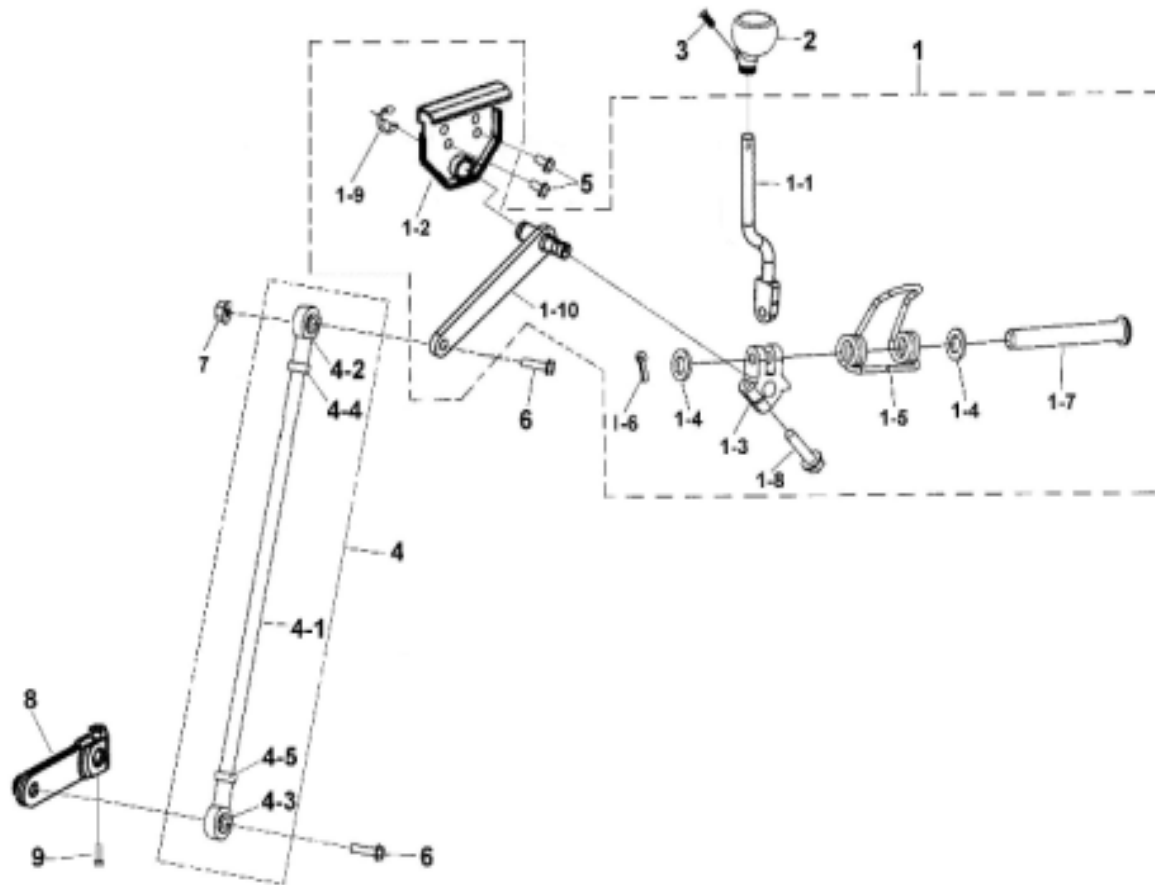


VXL250 VECTOR ST

ITEM	AVAIL	PART NO.	NAME	Q'TY	品名	VIN /ENG NO	E.P	F.R	TORQUE kgf-cm
17			CARBURETOR ASSY						
17-1		16100-RB1-000	CARB. ASSY.	1					
17-2		1711A-RB1-000	INLET PIPE ASSY.	1					
17-3	N	91308-HMA-000	O-RING 34*2.0	1					
17-4	N	94050-06000	NUT FLANGE 6MM	2					
17-5		96001-06022-00	FLANGE BOLT SH 6*22	2					

VXL250 VECTOR ST

18 GEAR SHAFT LEVER, SAFETY SWITCH

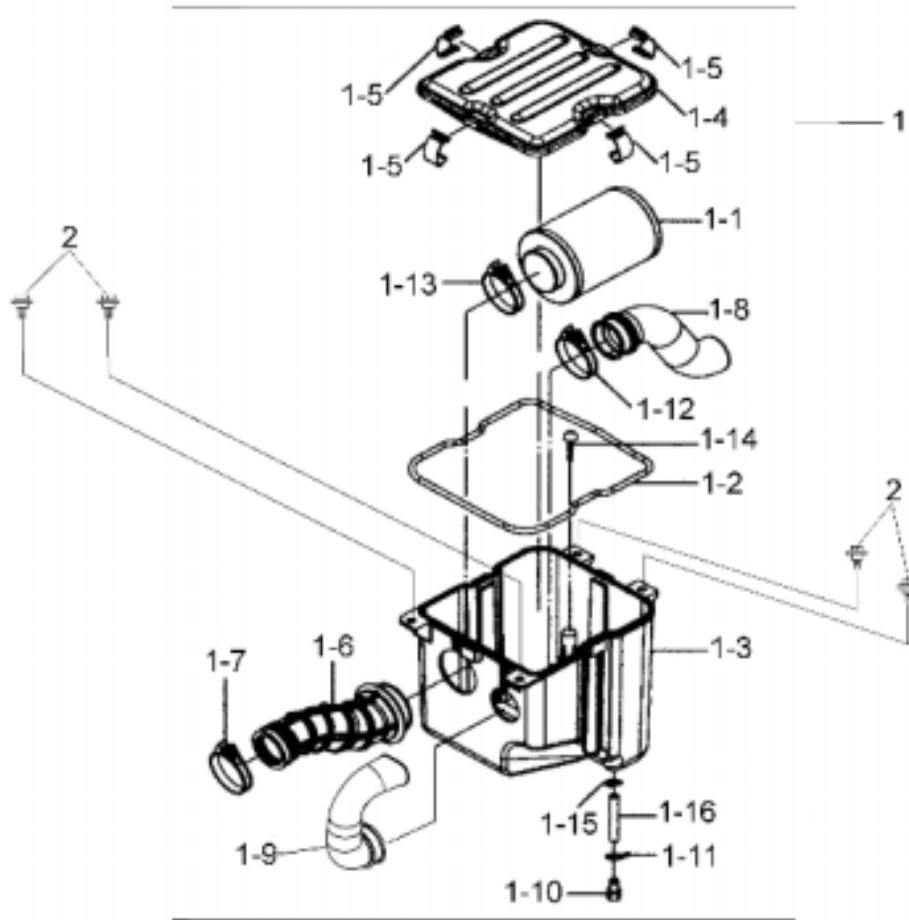


VXL250 VECTOR ST

ITEM	AVAIL	PART NO.	NAME	Q'TY	品名	VIN /ENG NO	E.P	F.R	TORQUE kgf-cm
18			GEAR SHAFT LEVER, SAFETY SWITCH		變檔杆，安全開關				
18-1		B464A-LRA0-0000	SHAFT COMP ROD	1	變檔杆組				
18-1-1		B4641-LRA0-0000	ROD SHIFT	1	變檔杆				
18-1-2		B4622-GJA0-0000	FIXED SUPPORT CATCH	1	檔位固定座				
18-1-3		B4643-V30-0000	FIXED SUPPORT ROD COMP SHIFT	1	變檔杆固定座				
18-1-4		I4104-08515	WASHER	2	NO:064 平墊圈				
18-1-5		B4644-GJA0-0000	SPRING ROD SHIFT	1	變檔杆彈簧				
18-1-6		I4201-46195	SPLIT PIN	2	NO:002 開口銷				
18-1-7		B4645-V30-0000	PIN ROD SHIFT	1	變檔杆銷				
18-1-8		I5701-06025-0C	BOLT , HEXAGON HEAD	1	NO:011 六角帶頭螺栓				
18-1-9		I4540-1201A	CIRCLIP	1	NO:003 E型扣環				
18-1-10		B4646-LRA0-0000	SHIFT TRANSLATOR	1	變檔杆連接器				
18-2		B4642-LRA0-0000	HANDLE PLASTICS ASSY.	1	變檔把手				
18-3		I3600-05015-0G	SCREW FLAT	1	平頭十字螺絲				
18-4		B4648-LRA0-0000	SHIFT TIE-ROR	1	變檔拉桿				
18-4-1		I2900-08320-0C	STUD BOLT	1	螺樁				
18-4-2		I5013-08030C	BALL JOINT R	1	萬向頭R				
18-4-3		I5013-08030C-L	BALL JOINT L	1	萬向頭L				
18-4-4		I4001-081C0	NUT HEX	1	六角螺帽				
18-4-5		I4001-081C0-L	NUT HEX	1	六角螺帽				
18-5		I0149-08016	BOLT, FLANGE (M8x16)	2	凸緣螺栓				
18-6		I6800-08030-0C	SOCKET BOLT	2	內六角承窩螺絲錘頭螺栓				
18-7		I5611-08200	NUT,FLANGE CHECK (M8)	1	凸緣防鬆螺帽				
18-8		B4612-V30-0000	ARM GEAR SHIFT	1	換檔臂				
18-9		I0149-06035	BOLT, FLANGE (M8x35)	1	凸緣螺栓				

VXL250 VECTOR ST

19 AIR CLEANER

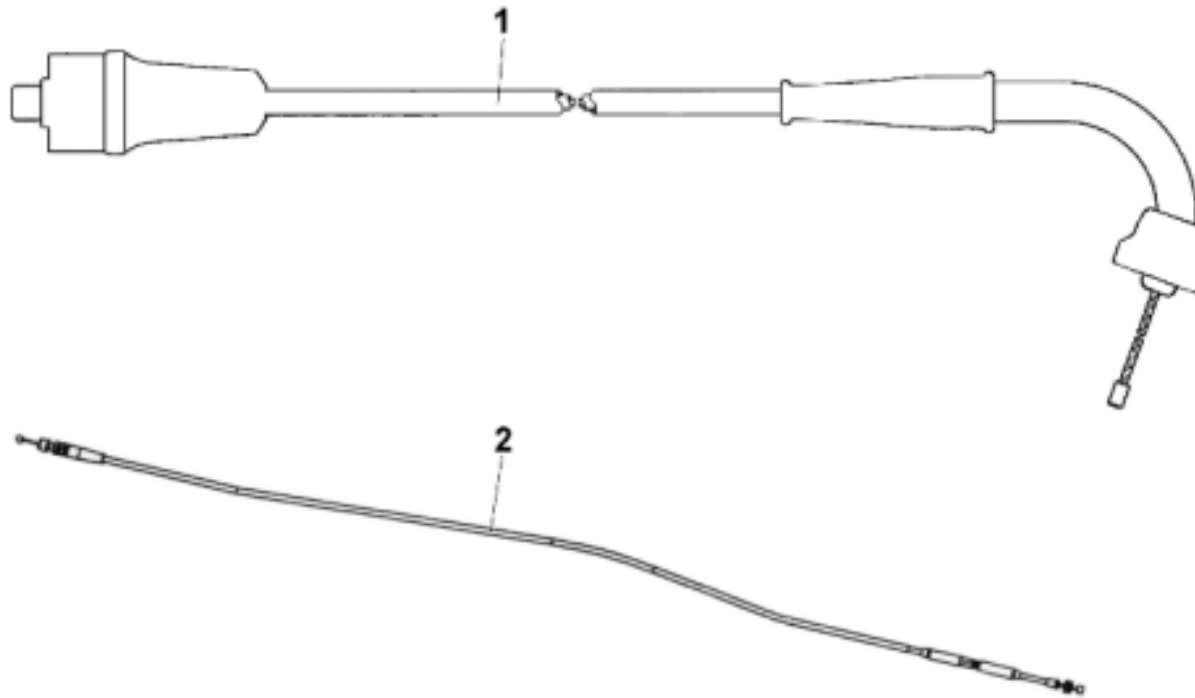


VXL250 VECTOR ST

ITEM	AVAIL	PART NO.	NAME	Q'TY	品名	VIN /ENG NO	E.P	F.R	TORQUE kgf-cm
19			AIR CLEANER		空氣濾清器				
19-1		17200-RB2-0000P	AIR/C ASSY	1	空氣濾清器總成				
19-1-1		17202-RB1-0000P	AIR/C ELEMENT ASSY	1					
19-1-2		17214-RB1-0000P	AIR/C COVER SEAL	1					
19-1-3		17230-RB1-0000P	AIR/C CASE	1					
19-1-4		17231-RB1-000P	AIR/C COVER	1					
19-1-5		17232-RB1-0000P	AIR/C COVER CLAMP	4					
19-1-6		17253-RB1-0000P	AIR/C CONN TUBE	1					
19-1-7		17255-B1C-0000P	A/C CONNECTING TUBE BAND	1					
19-1-8		17255-RB1-0000P	AIR/C INLET DUCT	1					
19-1-9		17257-RB2-0000P	AIR/C CASE DUCT	1					
19-1-10		17370-M9Q-0000P	BREATHER TUBE PLUG	1					
19-1-11		17371-M9Q-0000P	BREATHER TUBE CLIP	1					
19-1-12		90652-M8Q-0000P	AIR/C CONN TUBE BAND 46	1					
19-1-13		90652-RB1-0000P	AIR/C CONN TUBE BAND 58	1					
19-1-14		93893-05010-08	SCREW WASHER (5x10)	1					
19-1-15		95002-80000	TUBE CLIP C12	1					
19-1-16		95003-23010-60	V TUBE (8x12x100)	1					
19-2		90111-M9Q-0000P	FLANGE BOLT	4	螺栓				

VXL250 VECTOR ST

20 CARBURETOR

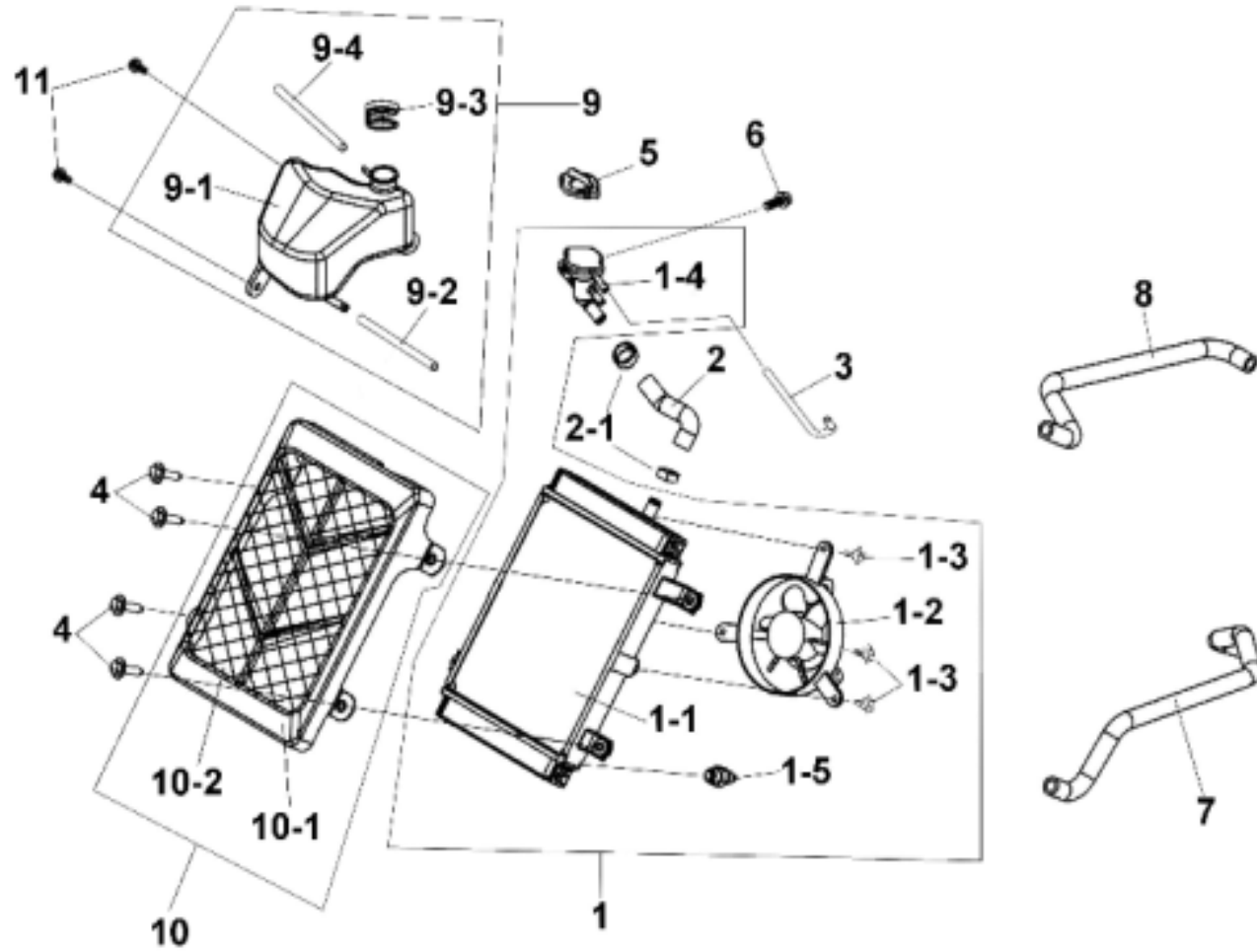


VXL250 VECTOR ST

ITEM	AVAIL	PART NO.	NAME	Q'TY	品名	VIN NO	E.P	F.R	TORQUE kgf-cm
20			CARBURETOR						
20-1		A7910-LRA0-0000	CABLE ASSY	1	加油導線				
20-2		A7920-LRA0-0000	CABLE ,AIR CUT	1	阻風門線				

VXL250 VECTOR ST

21 OIL COOLER

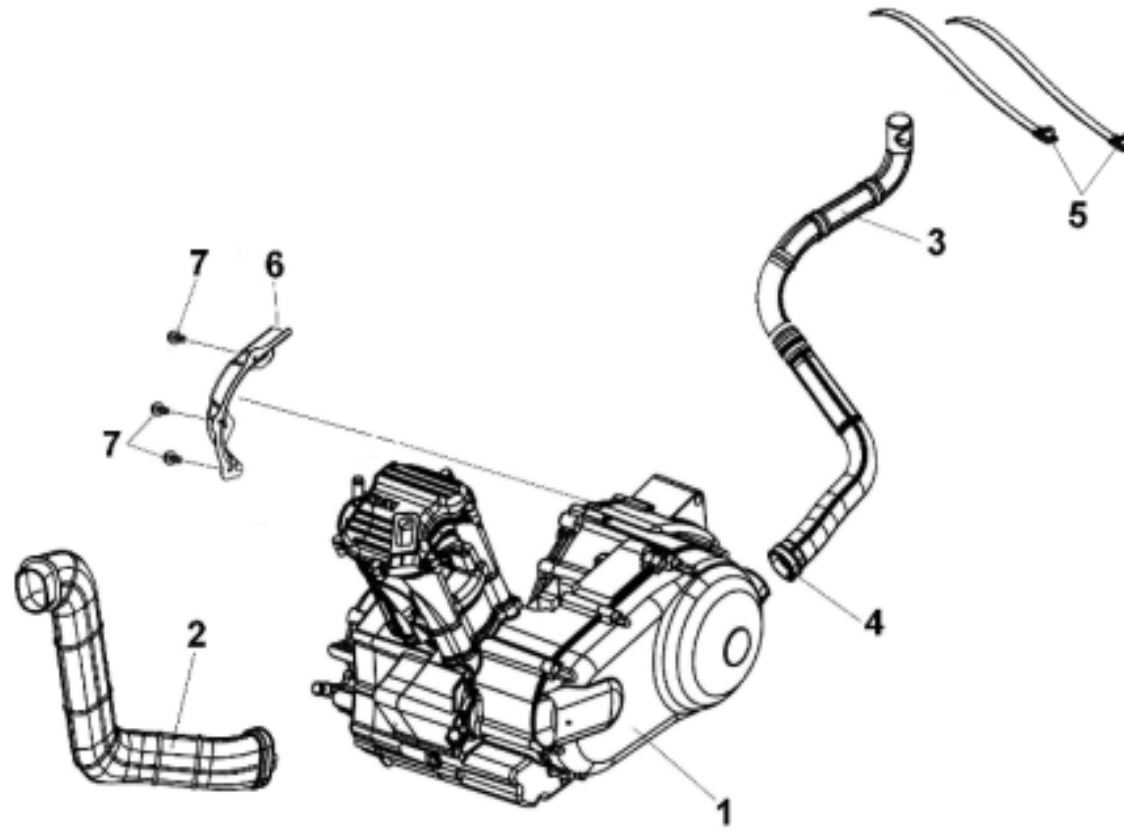


VXL250 VECTOR ST

ITEM	AVAIL	PART NO.	NAME	Q'TY	品名	VIN NO	E.P	F.R	TORQUE kgf-cm
21			OIL COOLER						
21-1		1900A-RB2-0000P	RADIATOR SET	1	水箱組				
21-1-1		19010-RB1-0000P	RADIATOR COMP	1					
21-1-2		19005-RB1-0000P	SHROUD ASSY	1					
21-1-3		95801-06012-08	FLANGE BOLT 6x12	3					
21-1-4		19039-H9A-0002P	FILLER NECK	1					
21-1-5		37760-HMA-0000P	THRMO. SW. ASSY	1	溫度開關				
21-2		A9125-LRA0-0000	RADIATOR HOSE OSE	1	加水管				
21-2-1		91405-SS0-0030P	CLAMP D21 TUBE	1					
21-3		A9124-LRA0-0000	RADIATOR HOSE A	1	負壓通氣管				
21-4		I0119-06030	BOLT HEXAGON(M6x30)	4	六角頭螺絲				
21-5		19111-H9A-0002P	RADIATOR FILLER CAP	1	冷卻水箱蓋				
21-6		I0149-06012	BOLT, FLANGE (M6x12)	1	凸緣螺絲				
21-7		A9121-LRA0-0000	RAD. INLET HOSE	1	入水管				
21-8		A9123-LRA0-0000	RAD. OUTLET HOSE	1	出水管				
21-9		A910A-LRA0-0000	RESERVE TANK ASSY	1	副水箱總成				
21-9-1		A9101-LRA0-0000	RESERVE TANK	1	副水箱				
21-9-2		A9108-LRA0-0000	RESERVE TANK OUTLET HOSE	1	副水箱出水管				
21-9-3		19104-MB0-7000P	TANK RESERVE CAP	1	副水箱帽				
21-9-4		A9109-LRA0-0000	RESERVE TANK HOSE	1	副水箱入水管				
21-10		A9401-LRA0-0000	SHROUD RADIATOR ASSY	1	水箱護罩總成				
21-10-1		A9400-LRA0-0000	SHROUD RADIATOR	1	水箱護罩				
21-10-2		E0415-LRA0-0000	FTLTER NET	1	擴張網				
21-11		I0119-06821	BOLT,HEXAGON HEAD(M6x20)	2	六角套頭螺栓 (M6x20)				

VXL250 VECTOR ST

22 ENGING

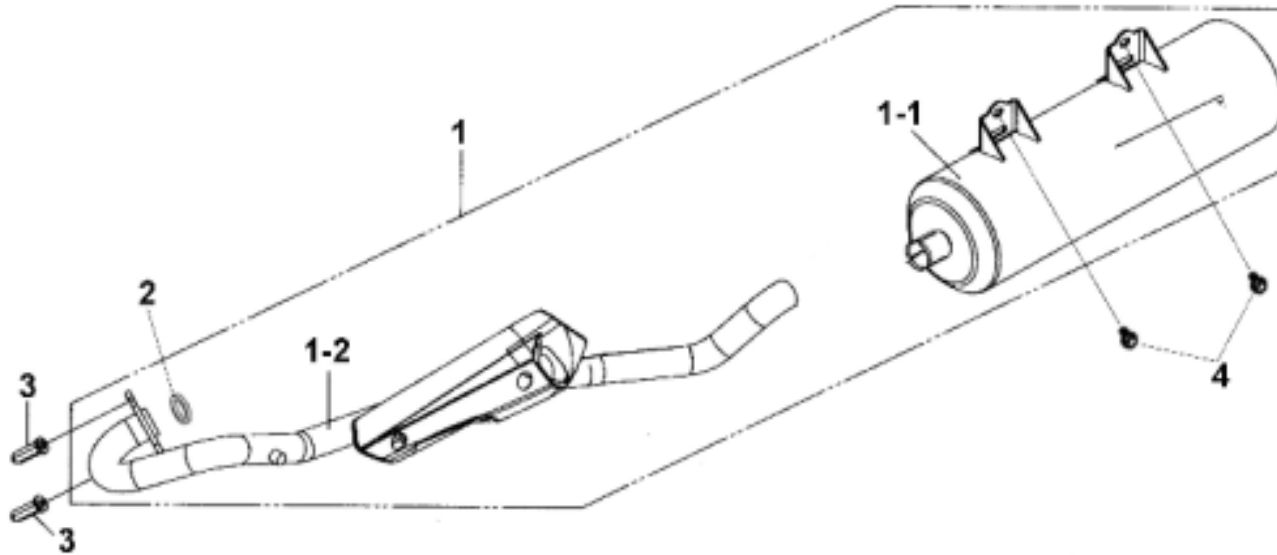


VXL250 VECTOR ST

ITEM	AVAIL	PART NO.	NAME	Q'TY	品名	VIN /ENG NO	E.P	F.R	TORQUE kgf-cm
22			ENGINE						
22-1		UA25B-6	ENG ASSY	1	引擎總成				
22-2		B0100-LRA0-0000	CVT INLET TUBE	1	CVT進氣管總成				
22-3		11346-RB1-0000P	CVT OUTLET TUBE	1	CVT排氣管總成				
22-4		11349-RB1-0000P	CVT OUTLET TUBE BAND	1	CVT排氣管束帶				
22-5		H3936-5AA0-0000	WIRE CLAMP	2	線束帶				
22-6		40105-RB2-0000P	CHAIN PROTECTO	1	鏈條保護蓋				
22-7		I0119-05071	SCREW,CROSS RECESS HEAD WASHE	3	圓頭十字帶墊圈螺絲				

VXL250 VECTOR ST

23 MUFFLER ASSY

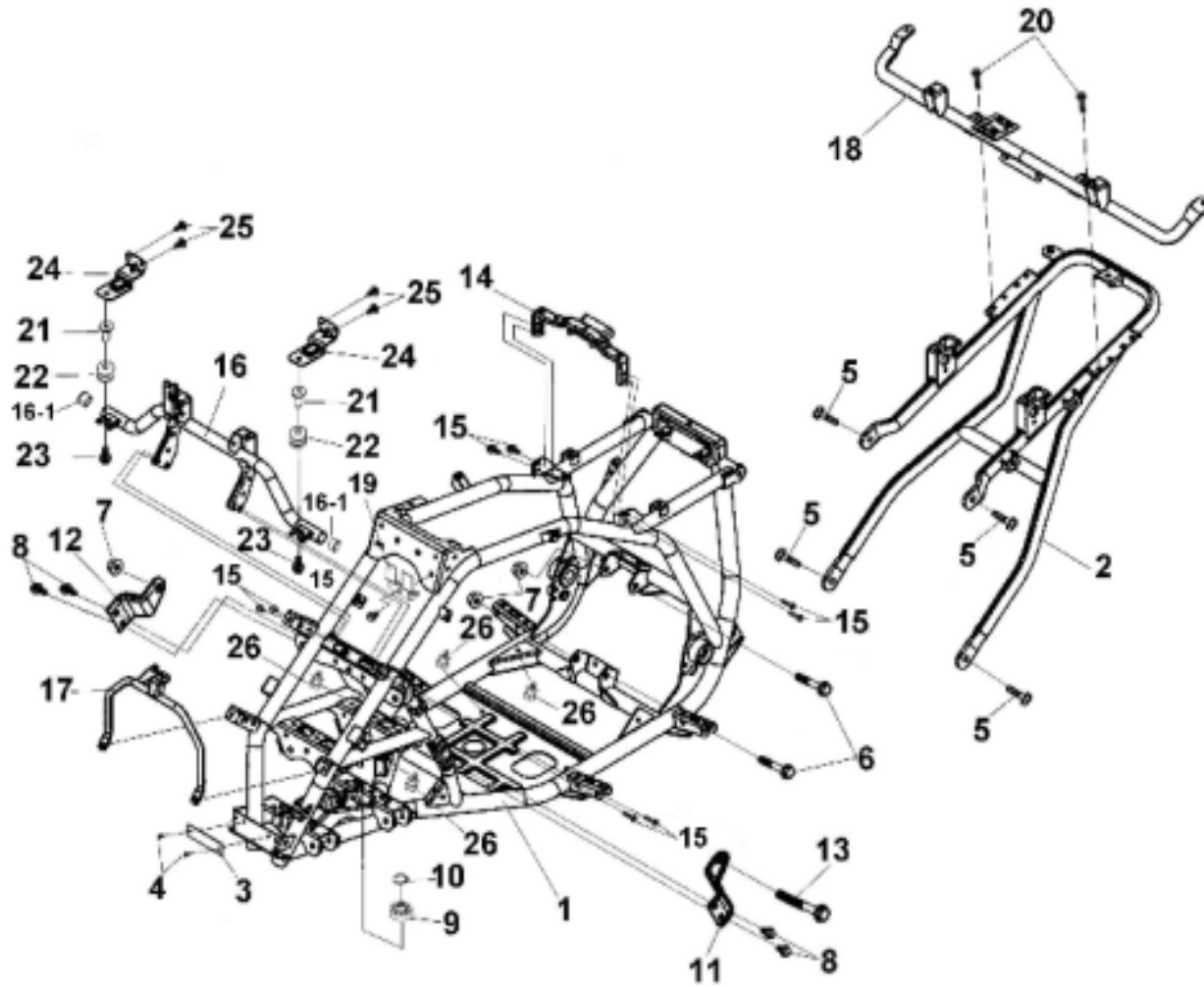


VXL250 VECTOR ST

ITEM	AVAIL	PART NO.	NAME	Q'TY	品名	VIN /ENG NO	E.P	F.R	TORQUE kgf-cm
23			MUFFLER ASSY.						
23-1		18000-RB2-0001P	MUFFLER ASSY.	1	排氣管總成				
23-1-1		18310-RB1-3000	EXH. MUFFLER COMP	1					
23-1-2		1832A-RB1-0000	EXH. PIPE ASSY	1					
23-2		A8291-RB2-0000	EXH. PIPE GASKET	1	排氣管墊片				
23-3		90043-HMA-0000P	CAP NUT 8MM	2	排氣管螺帽				
23-4		I0149-08012	BOLT, FLANGE HEAD	2	凸緣螺絲				

VXL250 VECTOR ST

24 FRAME

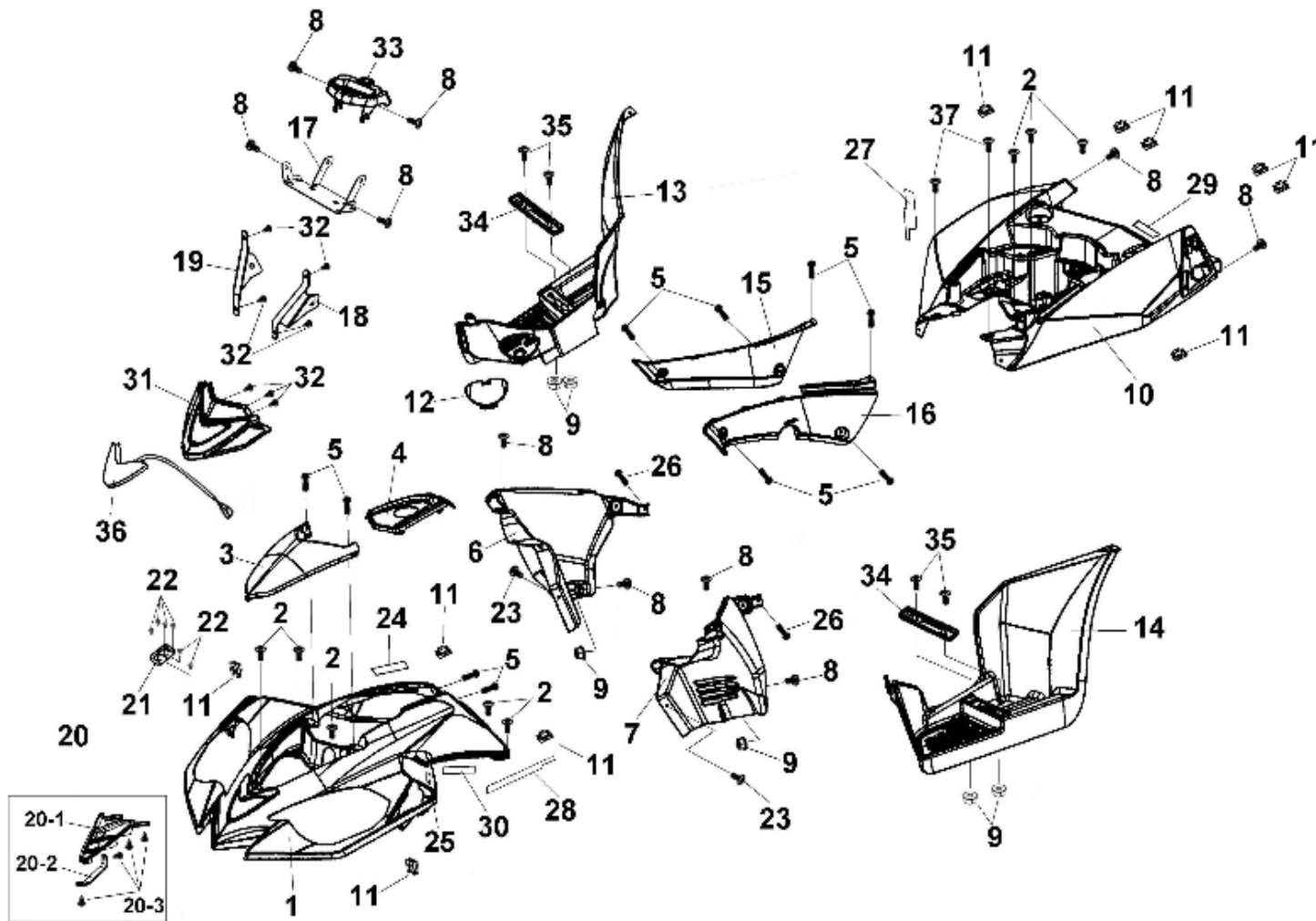


VXL250 VECTOR ST

ITEM	AVAIL	PART NO.	NAME	Q'TY	品名	VIN /ENG NO	E.P	F.R	TORQUE kgf-cm
24			FRAME						
24-1		E0100-LRC0-0000	FRAME FRONT	1	車架前段				
24-2		E0110-LRA0-0000	FRAME REAR	1	車架後段				
24-3		H7501-LRC0-0000	VIN PLATE	1	銘牌				
24-4		H750A-5BA1-0000	FIX NAIL	2	拉釘(ψ3.5×9)				
24-5		I0149-10022	BOLT, FLANGE (M10x22)	4	六角帶頭螺栓M10*22				
24-6		I5701-12100-0C	BOLT, FLANGE	2	六角帶頭螺栓M12*100				
24-7		I5601-12200	NUT ANTI-LOOSEN	3	六角螺帽				
24-8		I5801-10016-0HA	BOLT, FLANGE (M8x12)	4	凸緣螺絲				
24-9		I6100-6002ZZ	BEARING(6002ZZ)	1	軸承				
24-10		I4510-32000	C CLIP	1	C型扣環				
24-11		E0101-LRA0-0000	LEFT ENG.BRACKET	1	左引擎固定板件				
24-12		E0102-LRA0-0000	RIGHT ENG.BRACKET	1	右引擎固定板件				
24-13		I5701-12160-0C	BOLT, FLANGE	1	六角帶頭螺栓M12*160				
24-14		E0170-LRA0-0000	SEAT STEY	1	座墊固定座				
24-15		I0149-06012	BOLT, FLANGE (M6x12)	9	凸緣螺栓				
24-16		E0105-LRA0-0000	UPPER SUPPORT BAR,FRONT FENDER	1	前擋泥板上支撐架				
24-16-1		E0707-5EE0-0000	RUBBER PLUE	2	管塞				
24-17		E0106-LRA0-0000	LOWER SUPPORT BAR,FRONT FENDER	1	前擋泥板下支撐架				
24-18		E0107-LRA0-0000	SUPPORT BAR,REAR FENDER	1	後擋泥板支撐桿				
24-19		C6602-LRA0-0000	HOLDER RELAY	1	繼電器固定片				
24-20		I0149-08012	BOLT, FLANGE (M8x12)	2	凸緣螺絲				
24-21		H1104-BCA0-0000	COLLAR,FLANGED	2	襯套				
24-22		F0703-BCA0-0000	DAMPER	2	減震橡膠				
24-23		I0119-06821	BOLT,HEXAGON HEAD(M6x20)	2	六角螺栓(M6×20)				
24-24		E0111-LRA0-0000	STAY HEAD LAMP	2	頭燈托架				
24-25		I3903-312B0	TRUSS	4	十字自攻螺絲				
24-26		D3211-LRA0-0000	CLIP	4	扣具				

VXL250 VECTOR ST

25 FENDER



VXL250 VECTOR ST

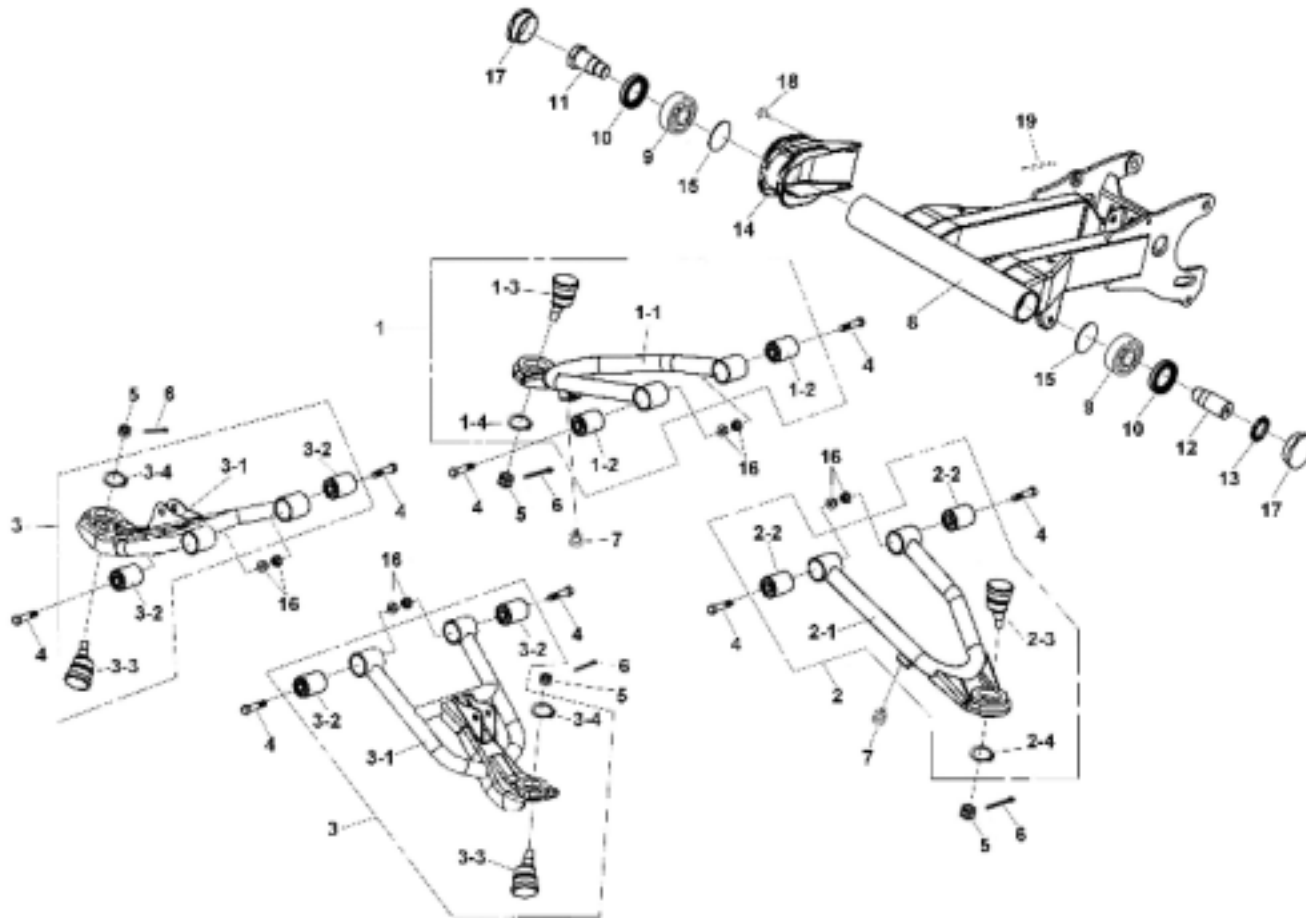
ITEM	AVAIL	PART NO.	NAME	Q'TY	品名	VIN /ENG NO	E.P	F.R	TORQUE kgf-cm
25			FENDER						
25-1		F4300-LRA0-0700	FR. FENDER ASSY(SILVER)	1	前擋泥板(銀色)				
		F4300-LRA0-0800	FR. FENDER ASSY(BLACK)	1	前擋泥板(黑色)				
		F4300-LRA0-5400	FR. FENDER ASSY(BLUE)	1	前擋泥板(藍色)				
25-2		I0119-06821	BOLT,HEXAGON HEAD(M6x20)	8	六角螺栓(M6×20)				
25-3		F4301-LRA0-0000	FRONT CENTRAL COVER	1	前中心蓋				
25-4		F4302-LRA0-0000	REAR CENTRAL COVER	1	後中心蓋				
25-5		I8310-FIA0-0000	PLASTIC SCREW	10	塑膠螺絲				
25-6		F4303-LRA0-0000	FR NT SIDE COVER R	1	前擋泥板右側蓋				
25-7		F4304-LRA0-0000	FR NT SIDE COVER L	1	前擋泥板左側蓋				
25-8		E0117-9EA0-0000	SCREW,BUTTON HEAD (M6×18)	10	扁圓頭螺絲				
25-9		I5611-06200-0G	NUT	6	自鎖螺帽(墨綠)				
25-10		H3500-LRA0-0700	REAR FENDER (SILVER)	1	後擋泥板(銀色)				
		H3500-LRA0-0800	REAR FENDER (BLACK)	1	後擋泥板(黑色)				
		H3500-LRA0-5400	REAR FENDER (BLUE)	1	後擋泥板(藍色)				
25-11		I5900-06160	SPRING NUT U-TYPE(M6)	12	U型彈簧螺帽(M6)				
25-12		H3511-LRA0-0000	OIL CAP PLUG	1	機油孔塞				
25-13		H3520-LRA0-0000	FOOTREST,RIGHT	1	右置腳踏板				
25-14		H3620-LRA0-0000	FOOTREST,LEFT	1	左置腳踏板				
25-15		F4400-LRA0-0700	RIGHT SIDE COVER(SILVER)	1	右車身側蓋(銀色)				
		F4400-LRA0-0800	RIGHT SIDE COVER(BLACK)	1	右車身側蓋(黑色)				
25-16		F4500-LRA0-0700	LEFT SIDE COVER(SILVER)	1	左車身側蓋(銀色)				
		F4500-LRA0-0800	LEFT SIDE COVER(BLACK)	1	左車身側蓋(黑色)				
25-17		C7203-LRA0-0000	SPEEDOMETER BRACKET	1	儀表板固定座				
25-18		C7204-LRC0-0000	BRACKET HANDLE COVER L	1	把手前蓋支撐座(左)				
25-19		C7205-LRC0-0000	BRACKET HANDLE COVER R	1	把手前蓋支撐座(右)				
25-20		F4316-LRA0-0000	FRONT FENDER ADORNMENT COMP	1	前檔飾板組				
25-20-1	N	F4305-LRA0-0000	FRONT FENDER ADORNMENT	1	前檔飾板				
25-20-2	N	C3143-LRA0-0000	POSITION LAMP ASSY	1	位置燈固定片				
25-20-3	N	I3903-312B0	TRUSS	4	NO:009十字自攻螺絲				
25-21		B4627-LRA0-0000	SHAFT STAY	1	變檔蓋				
25-22		H750A-5BA1-0000	NAIL,PULL(ψ3.5×9)	6	拉釘(ψ3.5×9)				

VXL250 VECTOR ST

ITEM	AVAIL	PART NO.	NAME	Q'TY	品名	VIN /ENG NO	E.P	F.R	TORQUE kgf-cm
25			FENDER						
25-23		I3893-06016-0H	NO:004 SCREW WASHER	2	NO:004 圓頭十字螺絲+平墊圈				
25-24		H7129-FIA0-0000	STICKER,INDICATE GEAR	1	排擋指示貼紙			N/A	
		H7129-FIAF-0000	STICKER,INDICATE GEAR	1	排擋指示貼紙		N/A		
25-25		H7100-LRA0-0000	LABEL TTRE	1	胎壓貼紙			N/A	
		H7100-LRCF-0000	LABEL TIRE	1	胎壓貼紙		N/A		
25-26		I8310-06020	SCREW(M6x20G)	2	扁圓頭螺絲				
25-27		H7127-LRC0-0700	STICKER BODY R(SILVER)	1	車身貼紙右(銀色)				
		H7127-LRC0-0800	STICKER BODY R(BLACK)	1	車身貼紙右(黑色)				
25-28		H7103-LRC0-0700	STICKER BODY L(SILVER)	1	車身貼紙左(銀色)				
		H7103-LRC0-0800	STICKER BODY L(BLACK)	1	車身貼紙左(黑色)				
25-29		H7108-5EB0-0000	STICKER E-TON	1	E-TON 貼紙 銀(黑藍色車用)				
		H7108-5BA2-0700	STICKER E-TON(SILVER)	1	E-TON 貼紙 黑(銀色車專用)				
25-30		H7131-FIB0-0000	STICKER ,POWER SUPPLY	1	電源供應座貼紙			N/A	
		H7131-FIBF-0000	STICKER ,POWER SUPPLY	1	電源供應座貼紙		N/A		
25-31		E3205-LRC0-0000	FRONT COVER,HANDLE BAR	1	手把前蓋				
25-32		I3903-312B0	TRUSS	7	NO:009十字自攻螺絲				
25-33		E3206-LRA0-0000	REAR COVER,HANDLE BAR	1	手把後蓋				
25-34		E0701-GJA0-0000	ANTI-SLIP BOARD	2	腳踏板止滑桿				
25-35		I0149-06016	BOLT, FLANGE (M6x16)	4	凸緣螺栓(M6*16)				
25-36		33140-RA1-0002P	POSITION LAMP ASSY	1	位置燈				
25-37		I0119-06802	BOLT,HEXAGON HEAD(M6x16)	2	六角套頭螺栓				

VXL250 VECTOR ST

26 SWING ARM

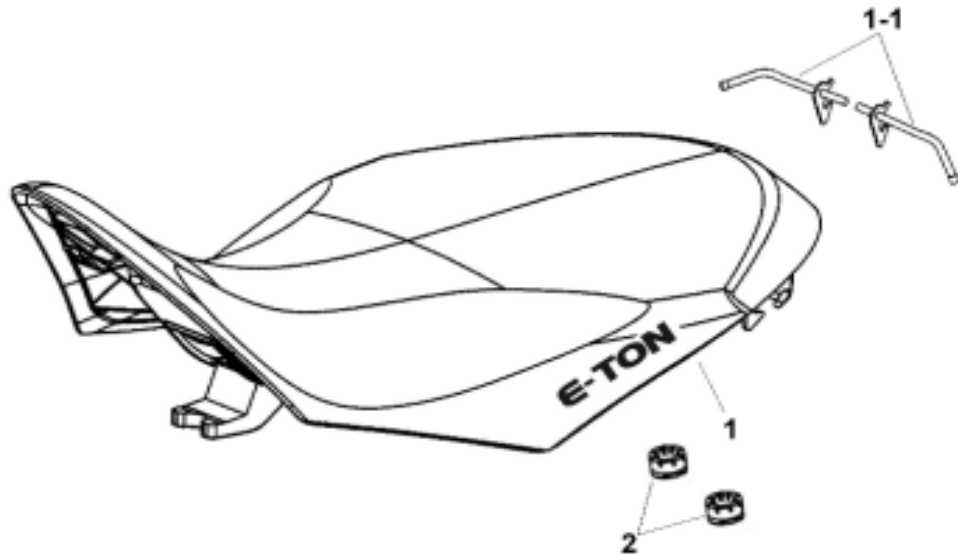


VXL250 VECTOR ST

ITEM	AVAIL	PART NO.	NAME	Q'TY	品名	VIN /ENG NO	E.P	F.R	TORQUE kgf-cm
26			SWING ARM						
26-1		E020A-LRA0-0700	ARM,SUSPENSION,L.U.ASSY(SILVE)	1	左上A臂總成(銀色)				
26-1-1		E0200-LRA0-0700	ARM,SUSPENSION,L.U.(SILVE)	1	左上A臂(銀色)				
26-1-2		A1203-LRA0-0000	BUSH,ARM SUSPENSION	2	A臂襯套 $\phi 10^* \phi 28.1^* 40$				
26-1-3		E0230-LRA0-0000	BALL JOINT	1	萬向頭				
26-1-4		I4510-30000	CIRCLIP	1	C型扣環				
26-2		E021A-LRA0-0700	ARM,SUSPENSION,R.U.ASSY(SILVE)	1	右上A臂總成(銀色)				
26-2-1		E0210-LRA0-0700	ARM,SUSPENSION,R.U.(SILVE)	1	右上A臂(銀色)				
26-2-2		A1203-LRA0-0000	BUSH,ARM SUSPENSION	2	A臂襯套 $\phi 10^* \phi 28.1^* 40$				
26-2-3		E0230-LRA0-0000	BALL JOINT	1	萬向頭				
26-2-4		I4510-30000	CIRCLIP	1	C型扣環				
26-3		E022A-LRA0-0700	ARM,SUSPENSION,LOWER ASSY(SILVE)	2	下A臂總成(銀色)				
26-3-1		E0220-LRA0-0700	ARM,SUSPENSION,LOWER (SILVE)	2	下A臂(銀色)				
26-3-2		A1203-LRA0-0000	BUSH,ARM SUSPENSION	2	A臂襯套 $\phi 10^* \phi 28.1^* 40$				
26-3-3		E0230-LRA0-0000	BALL JOINT	1	萬向頭				
26-3-4		I4510-30000	CIRCLIP	1	C型扣環				
26-4		I5701-10060-0A	BOLT FLANGE	8	六角帶頭M10*60				
26-5		I5500-12000	CASTLE NUT(M12)	4	城堡螺帽				
26-6		I4201-46325	COTTER PIN	4	開口銷				
26-7		D3211-LRA0-0000	CLIP	2	扣具				
26-8		E2200-LRA0-0000	SWING ARM SUB	1	後叉				
26-9		I1600-4T30203	BEARING	2	後叉軸承				
26-10		I1201-LRA0-0000	OIL SEAL40*20*8	2	後叉油封				
26-11		E2201-LRA0-0000	SWING RAM RIGHT BOLT	1	後叉右裝置螺栓				
26-12		E2203-LRA0-0000	SWING RAM LEFT BOLT	1	後叉左裝置螺栓				
26-13		I0231-LRA0-0000	NUT SWING ARM	1	後叉螺帽				
26-14		E2202-LRA0-0000	RUBBER SLEEVE	1	後叉軸套				
26-15		E2204-LRA0-0000	WASHER	2	後叉墊圈				
26-16		D4611-9EA0-0000	NUT,FLANGE CHECK	8	凸緣防鬆螺帽				
26-17		E2205-LRA0-0000	PLUG	2	封蓋				
26-18		I0109-5BA1-0000	BOLT	1	螺栓				
26-19		H7106-FIA0-0000	WARNING STICKER,CHAIN	1	鏈條警告貼紙			N/A	
		H7106-FIAF-0000	WARNING STICKER,CHAIN	1	鏈條警告貼紙(法國版)			N/A	

VXL250 VECTOR ST

27 SEAT

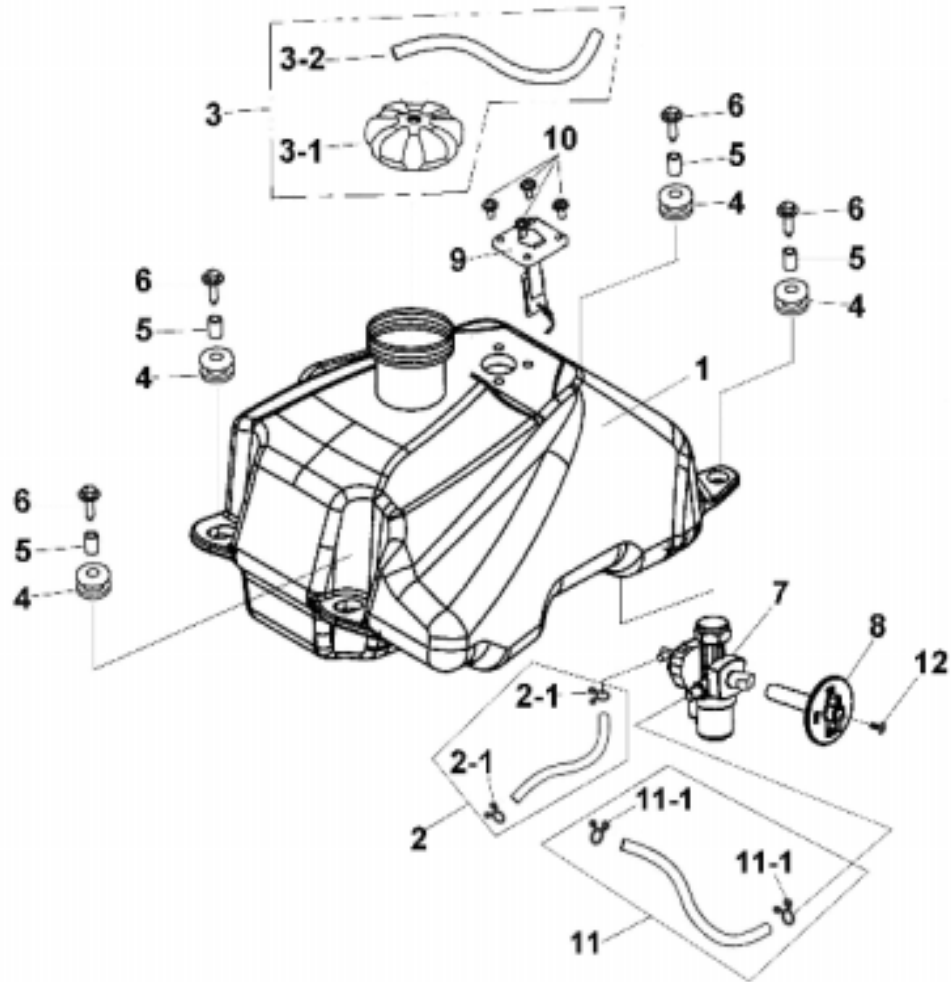


VXL250 VECTOR ST

ITEM	AVAIL	PART NO.	NAME	Q'TY	品名	VIN NO	E.P	F.R	TORQUE kgf-cm
27			SEAT						
27-1		G7200-LRC0-0000	SEAT ASSY	1	座墊總成(黑色)				
27-1-1		G7201-LRA0-0000	SEAT FASTENER	2	座墊扣				
27-2		G7212-5EA0-0000	RUBBER DAMPER	2	橡膠塊				

VXL250 VECTOR ST

28 FUEL TANK , OIL TANK ASSY

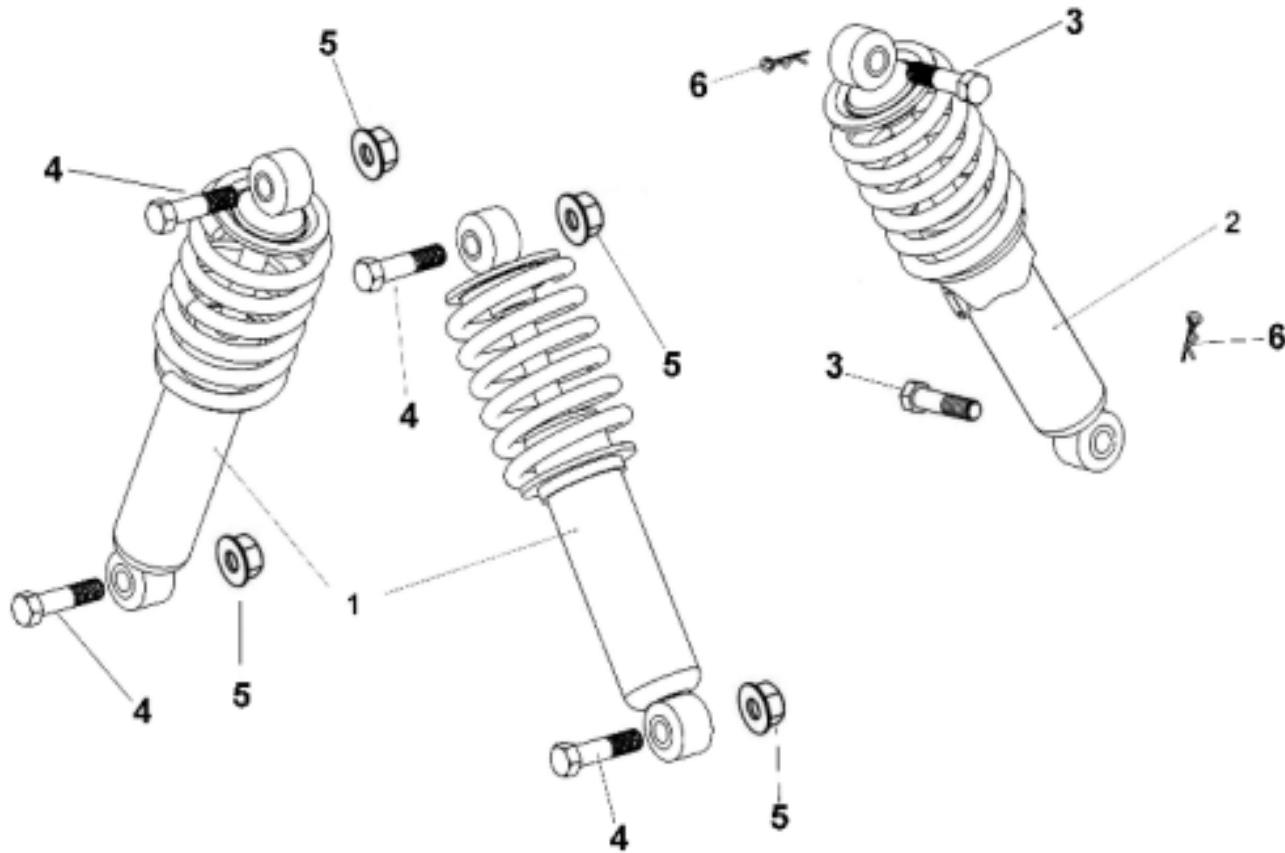


VXL250 VECTOR ST

ITEM	AVAIL	PART NO.	NAME	Q'TY	品名	VIN /ENG NO	E.P	F.R	TORQUE kgf-cm
28			FUEL TANK , OIL TANK ASSY						
28-1		A7500-LRC0-0000	FUEL TANK COMP	1	汽油箱				
28-2		A7514-LRA0-0000	FUEL TUBE	1	汽油管				
28-2-1		A7516-5EA0-0000	CLIP	2	管夾				
28-3		A762A-LRA0-0000	FUEL TANK CAP ASSY.	1	汽油箱蓋總成				
28-3-1		A7620-LRA0-0000	FUEL TANK CAP	1	汽油箱蓋				
28-3-2		A7621-LRA0-0000	BREATHE TUBE	1	油箱呼吸管				
28-4		A7510-FIA0-0000	FUEL TANK RUBBER PAD	4	汽油箱橡膠墊				
28-5		A7511-FIA0-0000	RUBBER INSULATOR	4	汽油箱墊片隔筒				
28-6		I0119-06030	BOLT HEXAGON(M6x30)	4	六角頭螺絲				
28-7		A6701-LRA0-0000	FUEL COCK ASSY	1	旋油塞總成				
28-8		A6702-LRA0-0000	FUEL COCK COVER	1	旋油塞蓋				
28-9		C780A-LRA0-0000	METER FUEL LEVER	1	汽油量表				
28-10		I0200-50160	BOLT,WITH WASHER(M5×16)	4	帶墊圈螺栓				
28-11		A751B-FIA0-0000	VACUUM TUBE COMP	1	負壓管				
28-11-1		A7518-FIA0-0000	CLAMPER PULSER CORD	2	線夾				
28-12		I8506-04016	SCREW,PAN HEAD(M4x16)	1	盤頭螺絲(M4x16)				

VXL250 VECTOR ST

29 SUSPENSION

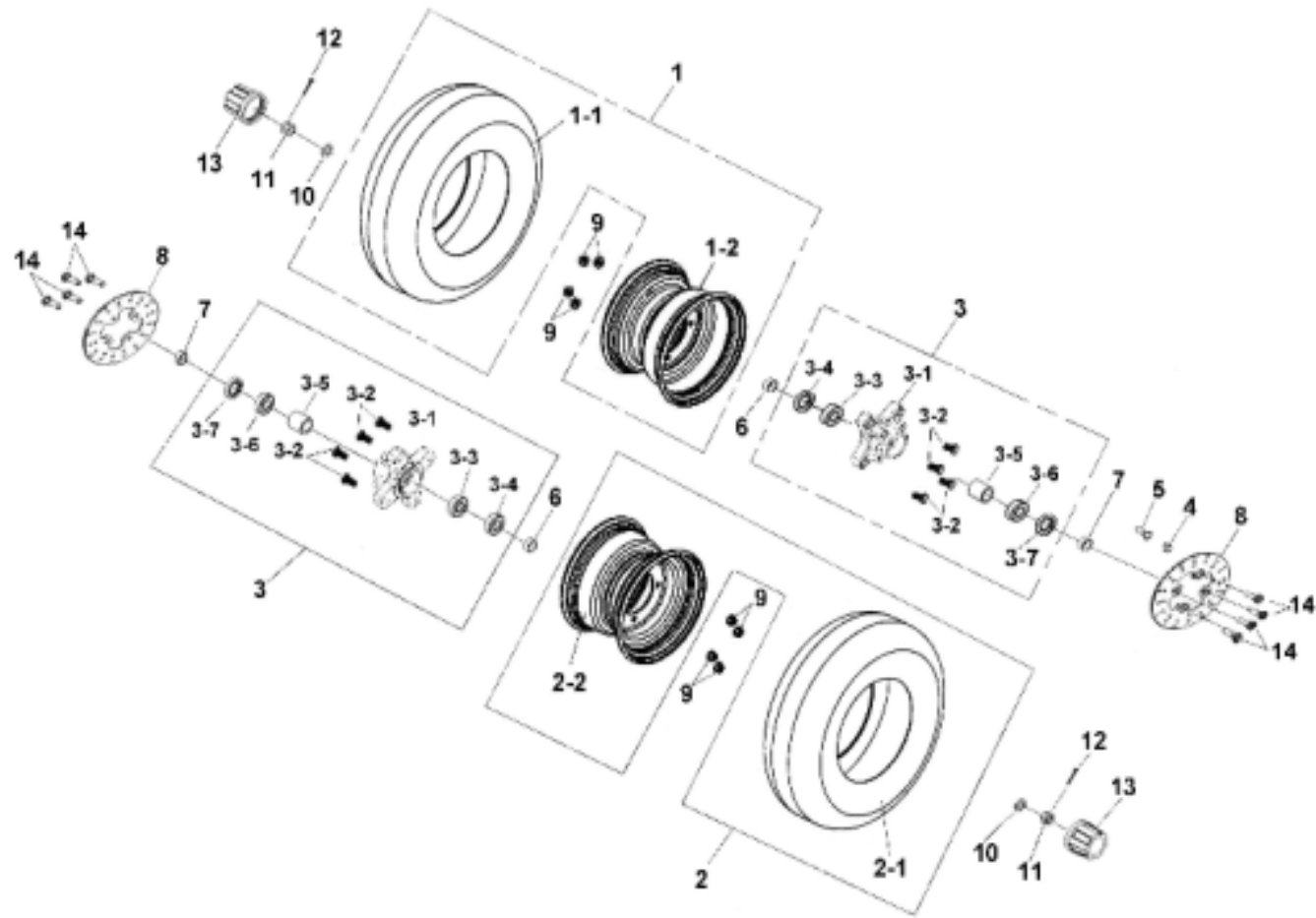


VXL250 VECTOR ST

ITEM	AVAIL	PART NO.	NAME	Q'TY	品名	VIN /ENG NO	E.P	F.R	TORQUE kgf-cm
29			SUSPENSION						
29-1		E1105-LRA0-0000	SUSPENSION, FRONT	2	前避震器				
29-2		E2400-LRA0-0000	SUSPENSION, REAR	1	後避震器				
29-3		I2811-10050-0G	NO:001 BOLT FLANGE	2	NO:001 六角帶頭固定螺絲				
29-4		I0102-10048	PIN HOLE BOLT(M10×48)	4	銷孔螺栓M10*48				
29-5		D4611-9EA0-0000	NUT,FLANGE CHECK	4	凸緣防鬆螺帽				
29-6		I0468-12006	CLIP	2	B型銷				

VXL250 VECTOR ST

30 FRONT WHEEL

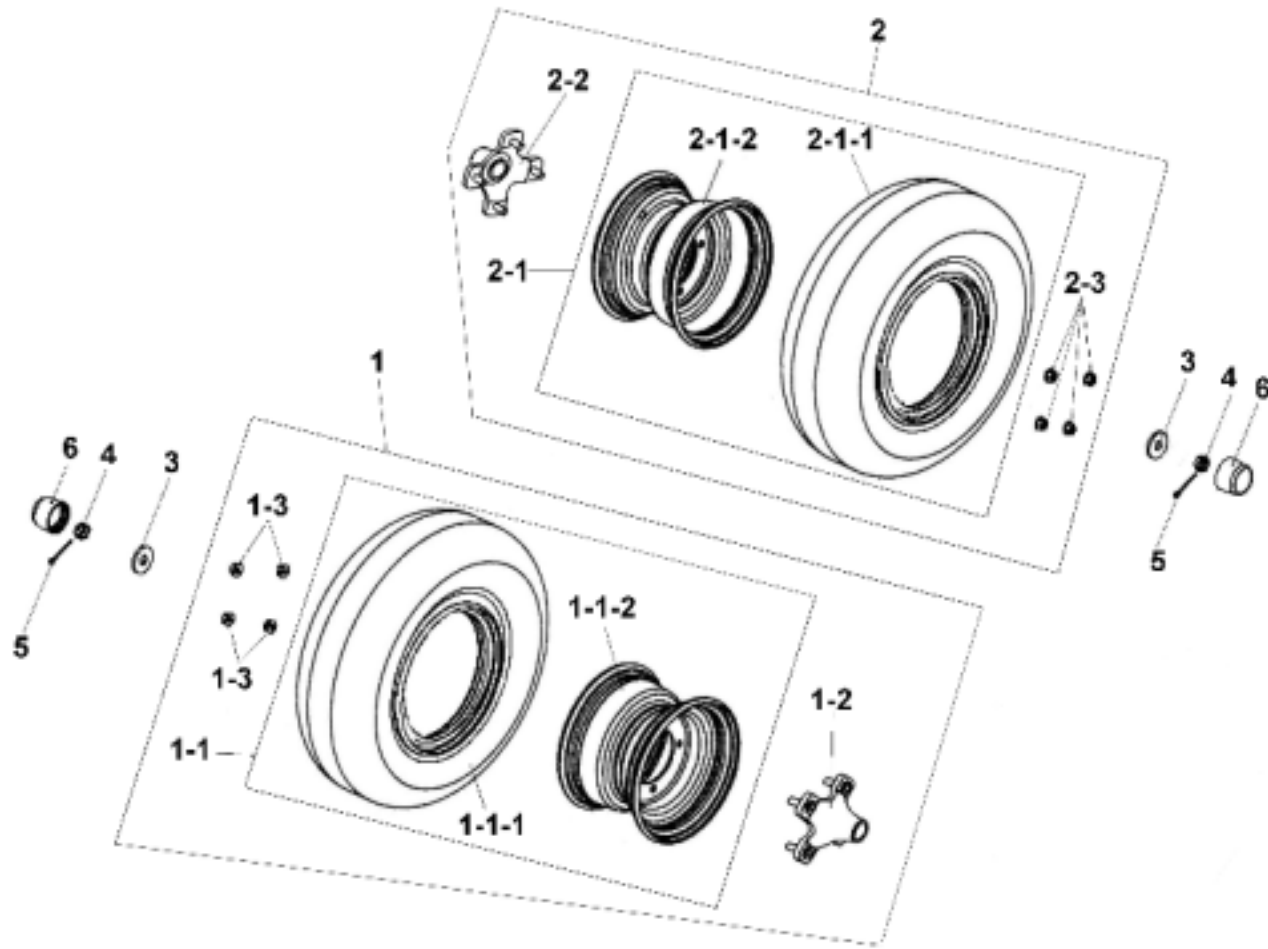


VXL250 VECTOR ST

ITEM	AVAIL	PART NO.	NAME	Q'TY	品名	VIN /ENG NO	E.P	F.R	TORQUE kgf-cm
30			FRONT WHEEL						
30-1		D471A-FIE0-0000	FRONT WHEEL ASSY.,LEFT(ON)	1	左前輪總成 (ON) (21x7-10)				
30-1-1		D4710-FIE0-0000	WHEEL TIRE (21x7-10)	1	輪胎(21 x 7-10)				
30-1-2		D4601-FIC0-0000	WHEEL RIM (10"×5.5)	1	輪圈(10"x5.5)				
30-1		D471A-LRC0-00FS	FRONT WHEEL ASSY.,LEFT(OFF)	1	左前輪總成 (OFF)				
30-1-1		D4710-LRA0-0000	WHEEL TIRE (21x7-10)	1	輪胎(21 x 7-10)				
30-1-2		D4601-FIC0-0000	WHEEL RIM (10"×5.5)	1	輪圈(10"x5.5)				
30-2		D471B-FIE0-0000	FRONT WHEEL ASSY.,RIGHT(ON)	1	右前輪總成 (ON)				
30-2-1		D4710-FIE0-0000	WHEEL TIRE (21x7-10)	1	輪胎(21 x 7-10)				
30-2-2		D4601-FIC0-0000	WHEEL RIM (10"×5.5)	1	輪圈(10"x5.5)				
30-2		D471B-LRC0-00FS	FRONT WHEEL ASSY.,RIGHT(OFF)	1	右前輪總成(OFF)				
30-2-1		D4710-LRA0-0000	WHEEL TIRE (21x7-10)	1	輪胎(21 x 7-10)				
30-2-2		D4601-FIC0-0000	WHEEL RIM (10"×5.5)	1	輪圈(10"x5.5)				
30-3		D461A-LRA0-0000	WHEEL HUB ASSY	2	前輪轂總成				
30-3-1		D4610-LRA0-0000	WHEEL HUB	2	前輪轂				
30-3-2		D4612-GJA0-0000	BOLT,STUD	8	緊配螺栓				
30-3-3		I6100-6003LLU	BEARING(6003-LLU)	2	軸承				
30-3-4		I1307-24035-10	OIL SEAL	2	外油封				
30-3-5		D4620-LRA0-0000	INNER SPACER	2	內定距套				
30-3-6		I6150-60040-10	NO:019 BEARING,BALL,RADIAL	2	NO:019滾珠軸承				
30-3-7		I1202-LRA0-0000	OIL SEAL	2	內油封42*28*7 TC				
30-4		C7205-5PA0-0000	MAGNET	1	磁石				
30-5		D4613-5PA0-0000	SCREW	1	轉接螺絲				
30-6		D4621-FIA0-0000	OUTER SPACER	2	外定距套				
30-7		D4621-LRA0-0000	OUTER SPACER	2	外定距套				
30-8		D5351-GJA0-0000	BRAKE DISC	2	前碟式煞車盤				
30-9		D4611-FIC0-0000	NUT(M10)	8	螺帽(M10)				
30-10		I9905-14200	WASHER(φ15×24×2.3)	2	墊圈				
30-11		I5500-14100	CASTLE NUT(M14)	2	城堡螺帽(M14)				
30-12		I4201-46325	COTTER PIN	2	開口銷				
30-13		D4609-9FA0-0000	RUBBER CAP	2	橡膠套				
30-14		D5350-FIC0-0000	BOLT,ROUND HEAD	8	煞車盤圓頭螺栓				

VXL250 VECTOR ST

31 REAR WHEEL

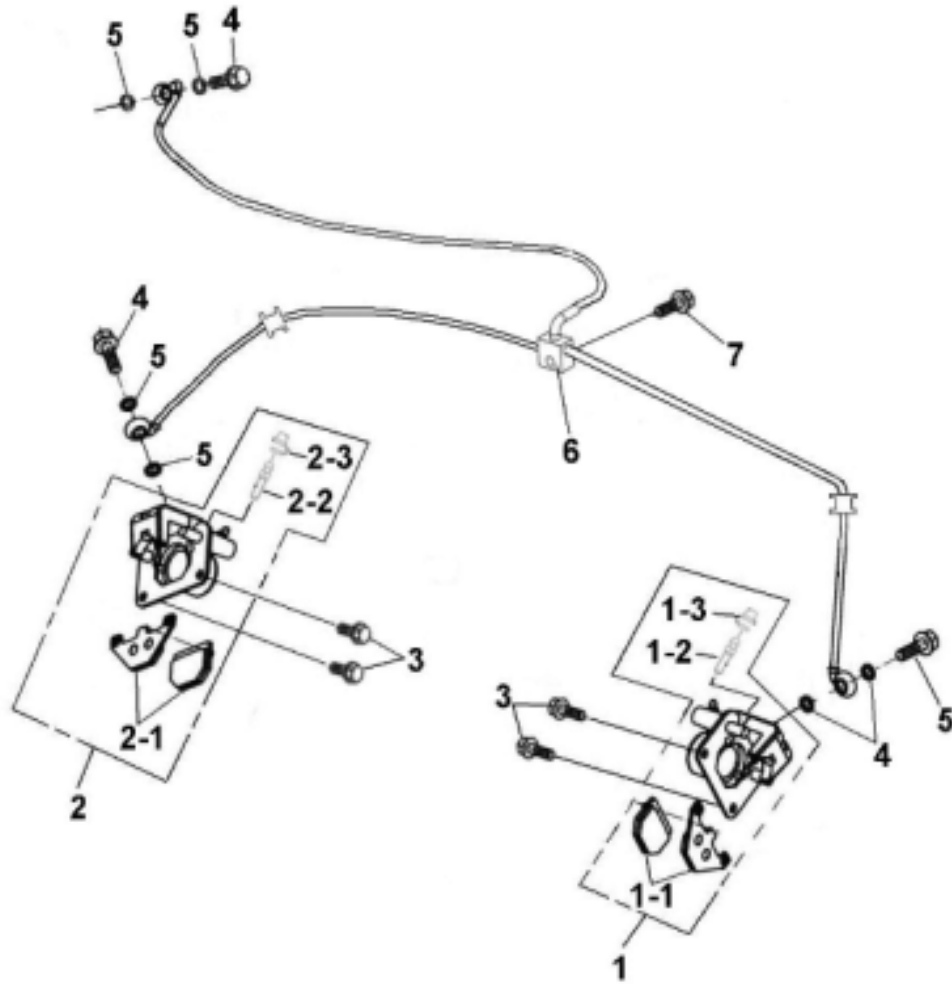


VXL250 VECTOR ST

ITEM	AVAIL	PART NO.	NAME	Q'TY	品名	VIN /ENG NO	E.P	F.R	TORQUE kgf-cm
31			REAR WHEEL						
31-1		D472C-LRC0-00NS	REAR WHELL ASSY.,LEFT(ON)	1	左後輪總成				
31-1-1		D471C-LRC0-00NS	REAR WHELL ASSY.,LEFT(ON)	1	左後輪總成(ON)(22x10-10)				
31-1-1-1		D4720-LRC0-0000	WHEEL TIRE (22x10-10)	1	輪胎(22x10-10)				
31-1-1-2		D4602-FIC0-8000	WHEEL RIM (10"x8)	1	輪圈(10"x8)				
31-1-2		D2705-GJA0-0000	SHAFT CONNECTER WITH BOLTS	1	後軸聯結器總成				
31-1-3		D4611-FIC0-0000	NUT,FLANGE CHECK(M10)	4	凸緣防鬆螺帽(M10)				
31-1		D472C-LRC0-00FS	REAR WHELL ASSY.,LEFT(OFF)	1	左後輪總成				
31-1-1		D471C-LRC0-00FS	REAR WHELL ASSY.,RIGHT(OFF)	1	左後輪總成(OFF)				
31-1-1-1		D4720-LRA0-0000	WHEEL TIRE (22x10-10)	1	輪胎(22x10-10)				
31-1-1-2		D4602-FIC0-8000	WHEEL RIM (10"x8)	1	輪圈(10"x8)				
31-1-2		D2705-GJA0-0000	SHAFT CONNECTER WITH BOLTS	1	後軸聯結器總成				
31-1-3		D4611-FIC0-0000	NUT,FLANGE CHECK(M10)	4	凸緣防鬆螺帽(M10)				
31-2		D472D-LRC0-00NS	REAR WHELL ASSY.,RIGHT(ON)	1	右後輪總成(ON)				
31-2-1		D471D-LRC0-00NS	REAR WHELL ASSY.,RIGHT(ON)	1	右後輪總成(ON)				
31-2-1-1		D4720-LRC0-0000	WHEEL TIRE (22x10-10)	1	輪胎(22x10-10)				
31-2-1-2		D4602-FIC0-8000	WHEEL RIM (10"x8)	1	輪圈(10"x8)				
31-2-2		D2705-GJA0-0000	SHAFT CONNECTER WITH BOLTS	1	後軸聯結器總成				
31-2-3		D4611-FIC0-0000	NUT,FLANGE CHECK(M10)	4	凸緣防鬆螺帽(M10)				
31-2		D472D-LRC0-00FS	REAR WHELL ASSY.,RIGHT(OFF)	1	右後輪總成(OFF)				
31-2-1		D471D-LRC0-00FS	REAR WHELL ASSY.,RIGHT(OFF)	1	右後輪總成(OFF)				
31-2-1-1		D4720-LRA0-0000	WHEEL TIRE (22x10-10)	1	輪胎(22x10-10)				
31-2-1-2		D4602-FIC0-8000	WHEEL RIM (10"x8)	1	輪圈(10"x8)				
31-2-2		D2705-GJA0-0000	SHAFT CONNECTER WITH BOLTS	1	後軸聯結器總成				
31-2-3		D4611-FIC0-0000	NUT,FLANGE CHECK(M10)	4	凸緣防鬆螺帽(M10)				
31-3		D2309-5EA0-0000	WHEEL AXLE WASHER, REAR(φ14×40×4.5)	2	後輪軸墊片				
31-4		I4012-140H0	CASTLE NUT(M14)	2	六角溝槽螺帽(M14)				
31-5		I4201-46325	COTTER PIN	2	開口銷				
31-6		D4609-5EA0-0000	RUBBER CAP	2	橡膠套				

VXL250 VECTOR ST

32 FRONT BRAKE SYSTEM

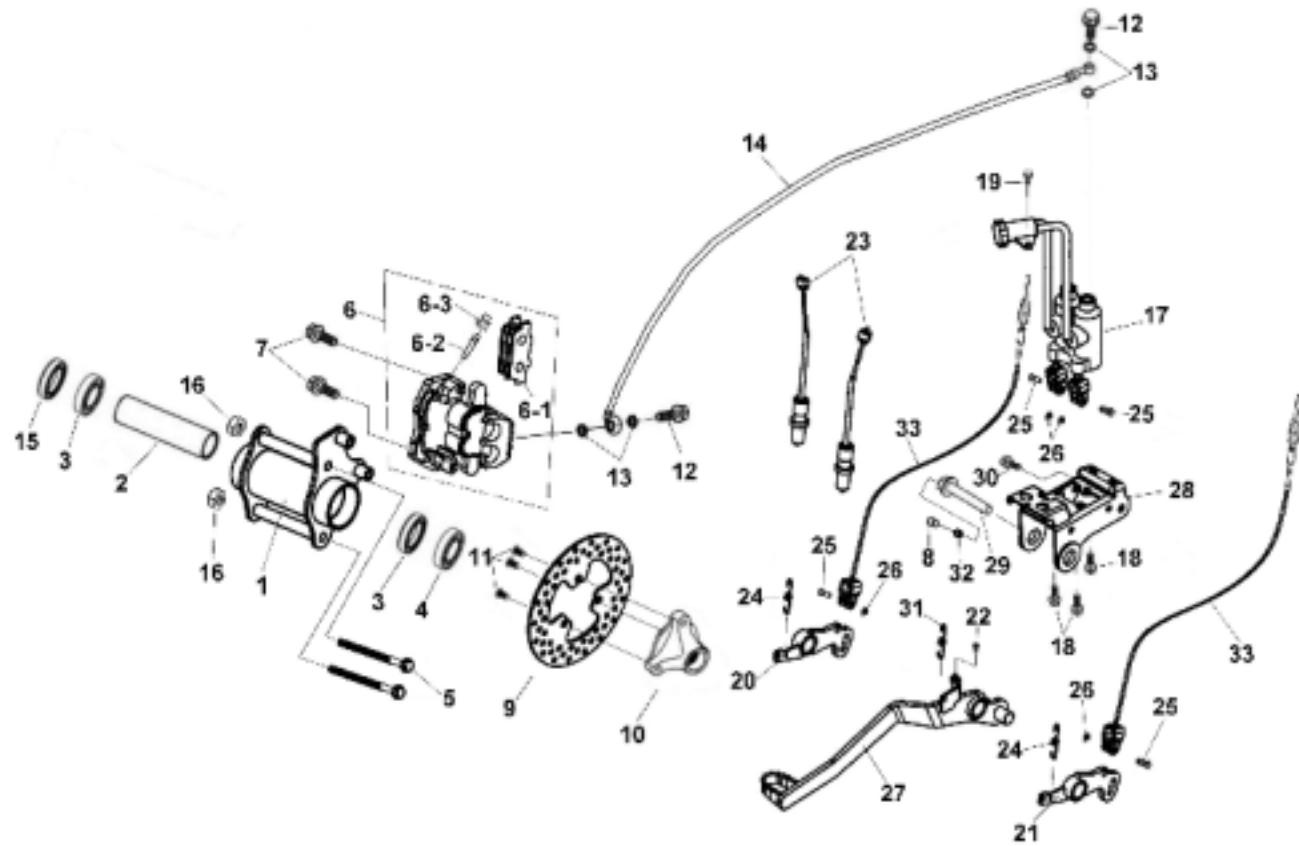


VXL250 VECTOR ST

ITEM	AVAIL	PART NO.	NAME	Q'TY	品名	VIN /ENG NO	E.P	F.R	TORQUE kgf-cm
32			FRONT BRAKE						
32-1		G7120-FIC0-0000	BRAKE CALLIPER,LEFT	1	前煞車卡鉗(左)				
32-1-1		G7131-5EE0-0000	BRAKE SHOE	1	煞車蹄片				
32-1-2		G7132-5EE0-0000	BOLT LEAKAGE	1	放氣螺絲				
32-1-3		G7133-BCA0-0000	CAP LEAKAGE	1	放氣帽				
32-1-4		G7139-5EE0-0000	SPRING,PAD	1	軛簧				
32-2		G7140-FIC0-0000	FRONT BRAKE CALLIPER,RIGHT	1	前煞車卡鉗(右)				
32-2-1		G7131-5EE0-0000	BRAKE SHOE	1	煞車蹄片				
32-2-2		G7132-5EE0-0000	BOLT LEAKAGE	1	放氣螺絲				
32-2-3		G7133-BCA0-0000	CAP LEAKAGE	1	放氣帽				
32-2-4		G7139-5EE0-0000	SPRING,PAD	1	軛簧				
32-3		I7507-FIA0-0000	BOLT,FLANGE	4	六角凸緣螺栓				
32-4		I0401-10034	UNION BOLT,BRAKE HOSE	3	煞車油管通油螺栓				
32-5		I0201-10118	WASHER,PLATE	6	銅墊圈				
32-6		G7110-LRC0-0000	FRONT BRAKE OIL TUBE ASSY	1	前煞車油管總成				
32-7		I5821-08020	BOLT,FLANGE	1	凸緣螺栓				

VXL250 VECTOR ST

33 REAR BRAKE SYSTEM



VXL250 VECTOR ST

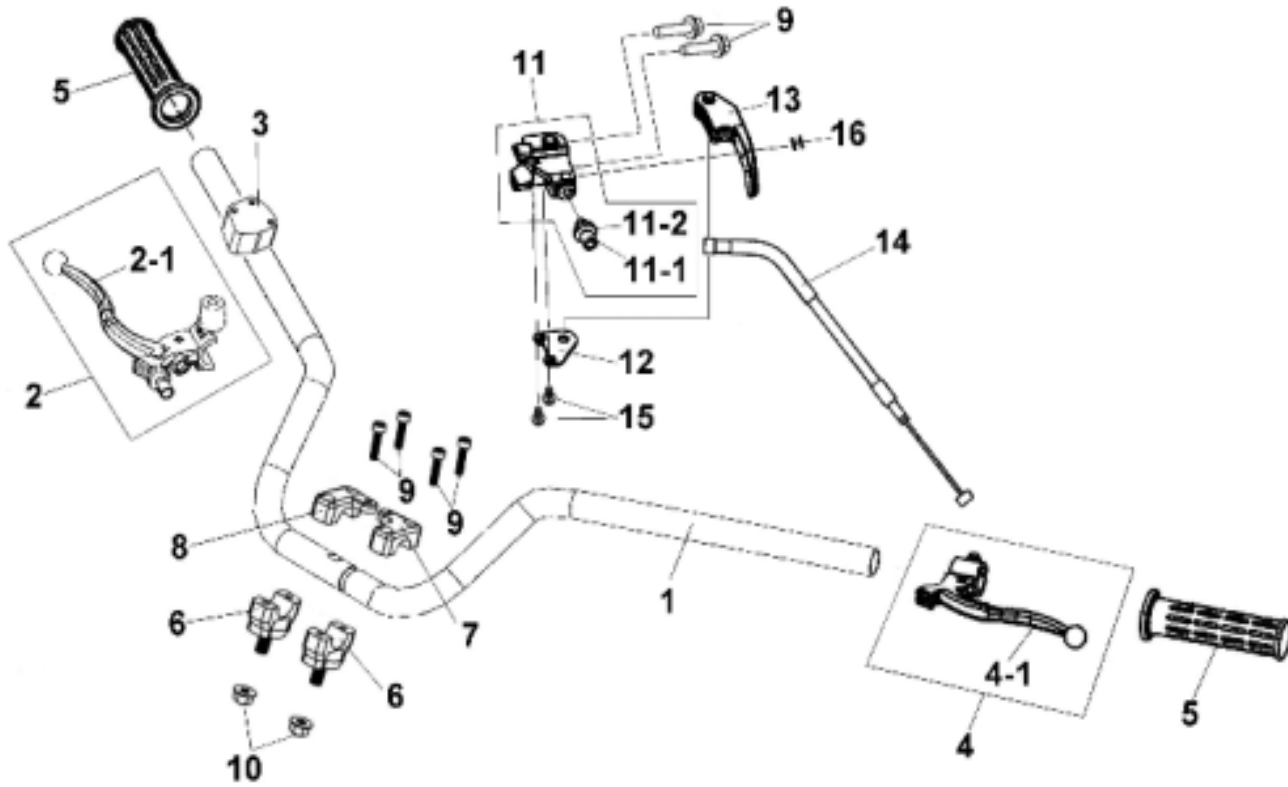
ITEM	AVAIL	PART NO.	NAME	Q'TY	品名	VIN /ENG NO	E.P	F.R	TORQUE kgf-cm
33			REAR BRAKE						
33-1		D2310-LRA0-0000	BEARING SEAT ASSY., REAR WHEEL AXLE	1	後輪軸承座總成				
33-2		D2311-FIA0-0000	SPACER	1	軸承座隔筒				
33-3		I6100-6007LLU	BEARING(6007LLU)	2	軸承(6007LLU)				
33-4		D2315-FIA0-0000	OIL SEAL(ψ43×62×12)	1	油封				
33-5		I5701-12165-0C	BOLT, FLANGE (M12x165)	2	凸緣螺栓(M12×165)				
33-6		G7130-LRA0-0000	RR. CALIPER ASSY	1	煞車卡鉗				
33-6-1		G7131-LRA0-0000	PAD ASSY BRAKE	1	煞車蹄片				
33-6-2		G7132-LRA0-0000	BOLT LEAKAGE	1	放氣螺絲				
33-6-3		G7133-LRA0-0000	CAP LEAKAGE	1	放氣帽				
33-7		I5701-10035-0C	BOLT , FLANGE(M8X35)	2	凸緣螺栓M10*35				
33-8		E0209-5EA0-9000	CAP,GREASE VALVE	1	黃油嘴蓋				
33-9		D3520-LRA0-0000	BRAKE DISK	1	煞車盤				
33-10		D3251-FIA0-0000	BRAKE DISK BRKT.	1	煞車盤固定座				
33-11		I0110-10811	UNION BOLT , BRAKE HOSE	3	煞車盤圓頭螺栓				
33-12		I0401-10034	UNION BOLT , BRAKE HOSE	2	煞車油管通油螺栓				
33-13		I0201-10118	WASHER , PLATE	4	銅墊圈				
33-14		D3210-LRA0-0000	REAR BRAKE OIL TUBE	1	後煞車油管				
33-15		D2313-FIA0-0000	OIL SEAL(ψ48X62X7)	1	油封				
33-16		I5601-12200	NUT ANTLOOSEN	2	六角螺帽				
33-17		G7100-LRC0-0000	FOOT MASTER CYLINDER ASSY.	1	煞車主缸				
33-18		I6705-06012-0C	BOLT, FLANGE (M8x12)	3	內六角螺絲				
33-19		I0149-06016	BOLT, FLANGE (M6x16)	1	凸緣螺栓(M6*16)				
33-20		D3410-LRC0-0000	BRAKE MASTER CYLINDER ARM F	1	煞車主缸搖臂(前)				
33-21		D3411-LRC0-0000	BRAKE MASTER CYLINDER ARM R	1	煞車主缸搖臂(後)				

VXL250 VECTOR ST

ITEM	AVAIL	PART NO.	NAME	Q'TY	品名	VIN /ENG NO	E.P	F.R	TORQUE kgf-cm
33			REAR BRAKE						
33-22		E7401-BCA0-0000	RUBBER,STAND STOPPER	1	緩衝橡膠				
33-23		G7202-GJA0-0000	SWITCH(FL00R)	2	腳煞車開閥				
33-24		E0711-FIC0-9000	SPG.BRAKE LAMP SWITCH	2	煞車燈開關彈簧				
33-25		I7510-06016-1B	PIN	4	帶頭銷				
33-26		I5300-00500-N	CLIP,E TYPE(ψ5)	4	E型扣環(ψ5)				
33-27		E0708-LRC0-0000	PEDAL COMP BRAKE	1	腳踏車踏桿				
33-28		G7180-LRC0-0000	MASTER CYLINDER HOLDER	1	煞車主缸固定座				
33-29		E0720-LRC0-0000	AXLE FIXED	1	固定軸				
33-30		I6800-08015-0H	SOCKET BOLT	1	內六角螺絲				
33-31		D3419-LRA0-0000	FRONT RETURN SPRING	1	前復歸彈簧				
33-32		I6600-06000	GREASE VALVE	1	黃油嘴				
33-33		E5451-LRC0-0000	CABEL,BRAKE	2	煞車線總成				

VXL250 VECTOR ST

34 HANDLE BAR

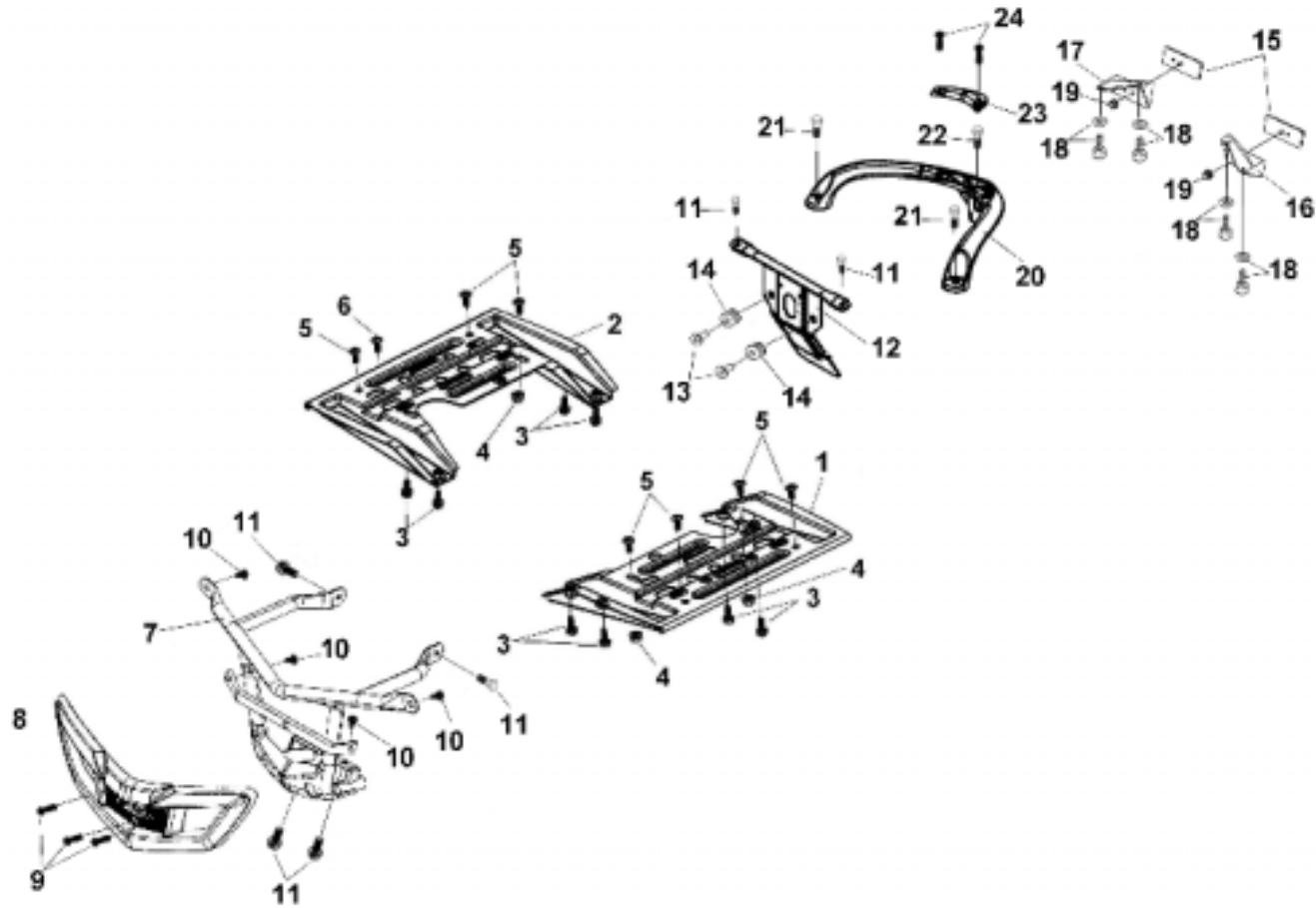


VXL250 VECTOR ST

ITEM	AVAIL	PART NO.	NAME	Q'TY	品名	VIN /ENG NO	E.P	F.R	TORQUE kgf-cm
34			HANDLE BAR						
34-1		E3100-LRA0-0000	HANDLE BAR ASSY	1	手把總成				
34-2		E3180-LRC0-0000	LEVER ASSY,RIGHT	1	右拉桿總成				
34-2-1		E3181-FIC0-0000	LEVER ,RIGHT	1	右拉桿				
34-2-2		E3175-LRC0-0000	LEVER,WASHER WAVE	1	拉桿波形墊圈				
34-3		E3190-GJA0-0000	THROT HOOSING ASSY	1	加油座總成				
34-4		E3170-LRC0-0000	LEVER ASSY,LEFT	1	左拉桿總成				
34-4-1		E3171-FIA0-0000	LEVER ,LEFT	1	左拉桿				
34-4-2		E3175-LRC0-0000	LEVER,WASHER WAVE	1	拉桿波形墊圈				
34-5		E3166-5EA0-0000	GRIP HANDLE	2	握把				
34-6		E3112-5EA0-0000	HANDLE BAR CLAMP,BOTTOM	2	手把固定座(底座)				
34-7		E3110-5EA0-0000	HANDLE BAR CLAMP,CAP,LEFT	1	手把固定座(上蓋,L)				
34-8		E3111-5EA0-0000	HANDLE BAR CLAMP,CAP,RIGHT	1	手把固定座(上蓋,R)				
34-9		I0050-06025	BOLT , SOCKET(M6X25)	6	內六角螺絲(M6*25)				
34-10		I5611-10200	NUT , FLANGE CHECK(M10)	2	凸緣防鬆螺帽(M10)				
34-11		D3701-LRA0-0000	UNION BOLT,BRAKE HOSE	1	駐車固定座				
34-11-1		E3185-LRA0-0000	ADJUSTER BOLT(M8x15)	1	調整螺絲 M8*15				
34-11-2		E3186-LRA0-0000	NUT(M4.5MM)	1	調整螺帽 4.5MM				
34-12		D3702-LRA0-0000	WASHER,PLATE	1	駐車固定片				
34-13		D3703-LRA0-0000	PARKING LEVER	1	駐車把手				
34-14		D3704-LRA0-0000	PARKING CABLE	1	駐車鋼索				
34-15		I8501-06010	SCREW,WITH WASHER	2	螺絲M6*10				
34-16		H475B-5BA1-0000	PLUG,LICENSE PLATE	1	牌照板塞頭				

VXL250 VECTOR ST

35 BUMPER,FOOTREST

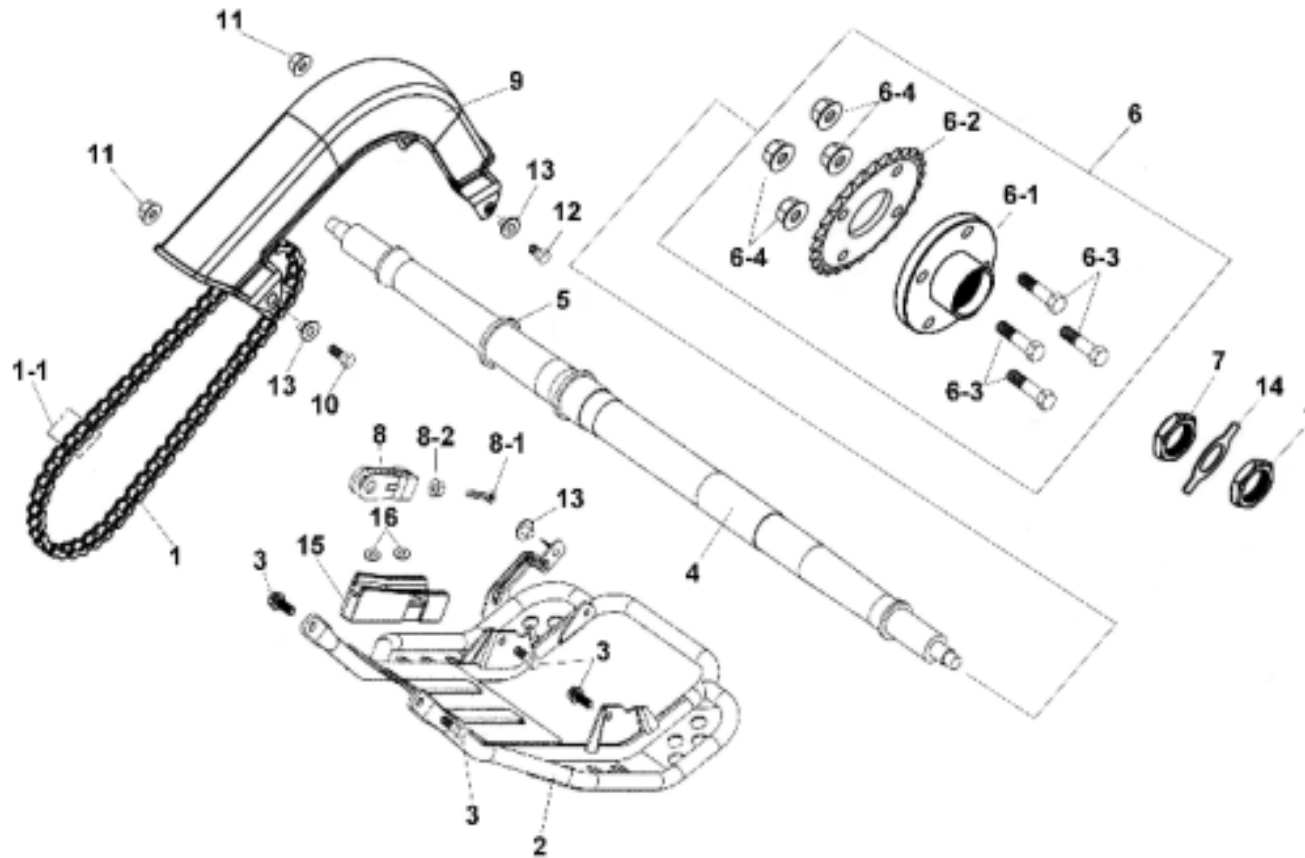


VXL250 VECTOR ST

ITEM	AVAIL	PART NO.	NAME	Q'TY	品名	VIN /ENG NO	E.P	F.R	TORQUE kgf-cm
35			BUMPER, FOOTREST BAR						
35-1		E0700-FIA0-0000	FOOTREST BAR	1	置腳踏板固定板				
35-2		E0700-FID0-0000	FOOTREST BAR	1	置腳踏板固定板(右)				
35-3		I7507-FIA0-0000	BOLT,FLANGE	8	六角螺絲附墊圈				
35-4		I5611-06200-0G	NUT	3	自鎖螺帽(墨綠)				
35-5		I0149-06823	SCREW,WITH WASHER	7	扁圓頭螺絲				
35-6		I0119-06802	BOLT,HEXAGON HEAD(M6x16)	1	六角套頭螺栓				
35-7		E0400-LRC0-0000	BUMPER FRONT	1	前防護桿總成				
35-8		E0430-LRC0-0000	BUMPER FRONT COVER	1	前防護桿蓋				
35-9		I8310-06020-01	SCREW(M6x20G)	3	扁圓頭螺絲				
35-10		I0110-40120	SCREW	4	自攻M4*16L				
35-11		I0149-08016	BOLT, FLANGE (M8x16)	6	凸緣螺絲				
35-12		H4751-LRC0-0000	PLASTIC PLATE,LICENSE	1	牌照板				
35-13		H1104-BCA0-0000	COLLAR,FLANGED	2	襯套				
35-14		F0703-BCA0-0000	DAMPER	2	減震橡膠				
35-15		C3741-5BA0-0000	RETRO-REFLECTOR	2	反光片				
35-16		C3744-LRA0-0000	STAY REFLECTOR LEFT	1	左反光片固定片				
35-17		C3745-LRA0-0000	STAY REFLECTOR RIGHT	1	右反光片固定片				
35-18		I3891-06020-0C	NO:003 SCREW WASHER	4	NO:003 圓頭十字螺絲+平墊圈				
35-19		I4050-05055-0A	NUT FLANGE(M5)	2	六角帶頭螺帽				
35-20		E0410-LRA0-0000	HANDRAIL	1	後扶手				
35-21		I0149-08030	BOLT, FLANGE (M8x30)	2	凸緣螺栓(M8*30)				
35-22		I5821-08020	BOLT,FLANGE	1	凸緣螺栓				
35-23		E0408-LRA0-0000	HANDRAIL COVER	1	後扶手飾板				
35-24		I3903-312B0	TRUSS	2	NO:009十字自攻螺絲				

VXL250 VECTOR ST

36 REAR WHEEL AXLE

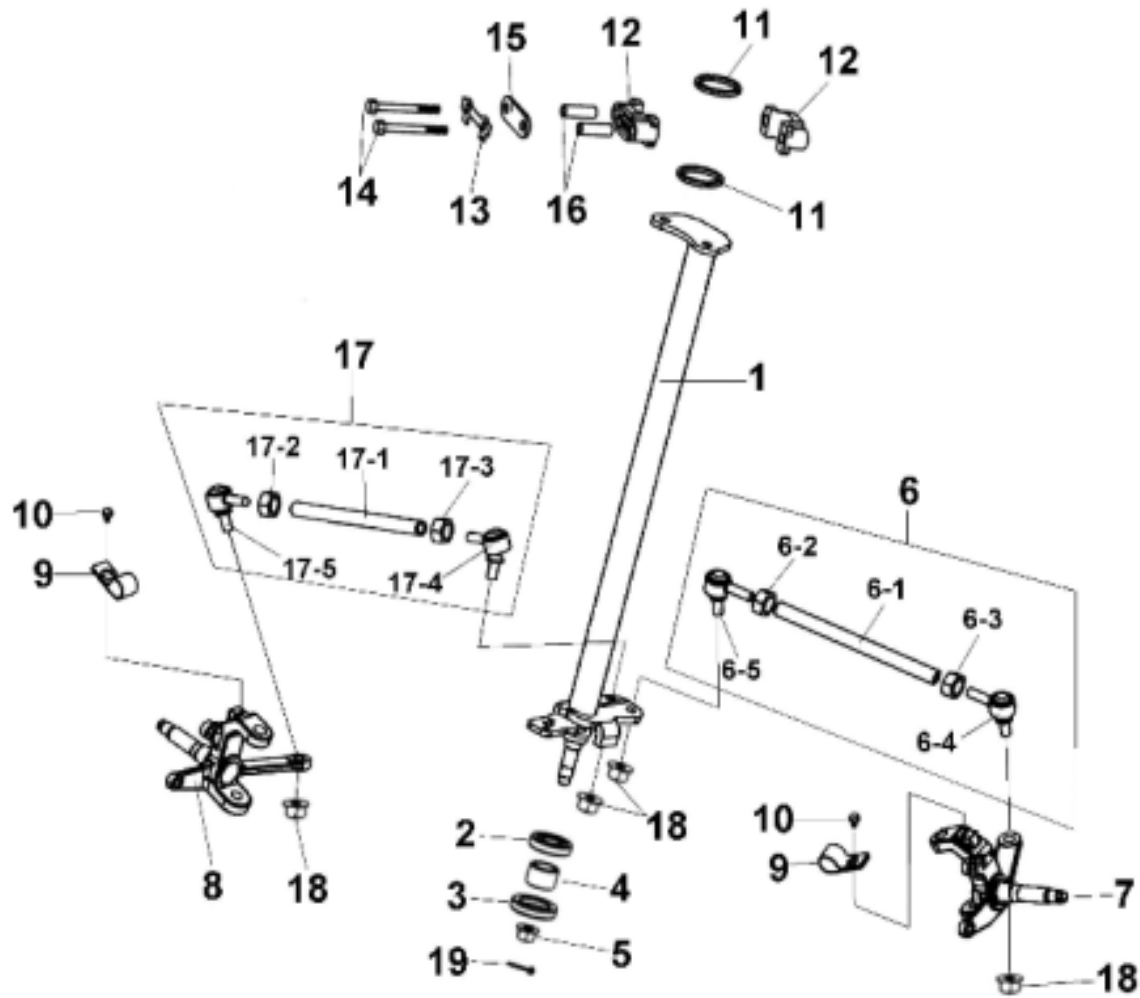


VXL250 VECTOR ST

ITEM	AVAIL	PART NO.	NAME	Q'TY	品名	VIN /ENG NO	E.P	F.R	TORQUE kgf-cm
36			REAR WHEEL AXLE		後輪軸				
36-1		D0100-LRA0-0000	DRIVE CHAIN ASSY(520HX90目)	1	油封鏈條(520H×90目)				
36-2		D0101-LRA0-0000	PROTECT COVER	1	軸承座防護蓋				
36-3		I0149-08016	BOLT, FLANGE (M8x16)	4	凸緣螺絲				
36-4		D2301-LRA0-0000	REAR AXLE	1	後輪軸				
36-5		D2303-LRA0-0000	AXLE CLIP,REAR	1	後輪軸扣環				
36-6		D0110-LRA0-0000	SPROCKET HOLDER , REAR ASSY	1	後鏈齒輪固定座總成				
36-6-1		D0111-LRA0-0000	SPROCKET HOLDER , REAR	1	後鏈齒輪固定座				
36-6-2		D1111-LRA0-0000	GEAR(520X34T)	1	齒輪				
36-6-3		D2706-9EA0-0000	STUD(M10)	4	緊配螺栓				
36-6-4		I5611-10200	NUT , HEXAGON CHECK(M10)	4	六角防鬆螺帽				
36-7		D2302-FIA0-0000	NUT REAR WHEEL AXLE(M28X1.5)	2	後輪軸螺帽				
36-8		D0120-LRA0-0000	ADJUSTER , CHAIN	1	鏈條調整器				
36-8-1		I2201-08050-0H	BOLT	1	六角螺栓M8*50				
36-8-2		I5800-08300	NUT(M8)	1	六角螺帽				
36-9		D0102-FIA0-0000	DRIVE CHAIN COVER	1	鏈條防護蓋				
36-10		I0149-06020	BOLT, FLANGE (M6x20)	1	凸緣螺栓(M6×20)				
36-11		I5611-06200-0G	NUT	2	自鎖螺帽(墨綠)				
36-12		I0149-06012	BOLT, FLANGE (M6x12)	1	凸緣螺栓				
36-13		H3503-LRA0-0000	T COLLAR	3	T形隔筒				
36-14		D2303-GJA0-0000	PLATE FIXED REAR AXLE	1	後輪軸防脫片				
36-15		D0130-LRA0-0000	GUIDE CHAIN	1	導鍊器				
36-16		I4104-05501	WASHER 15*5.5*1T	2	平墊圈				

VXL250 VECTOR ST

37 STEERING

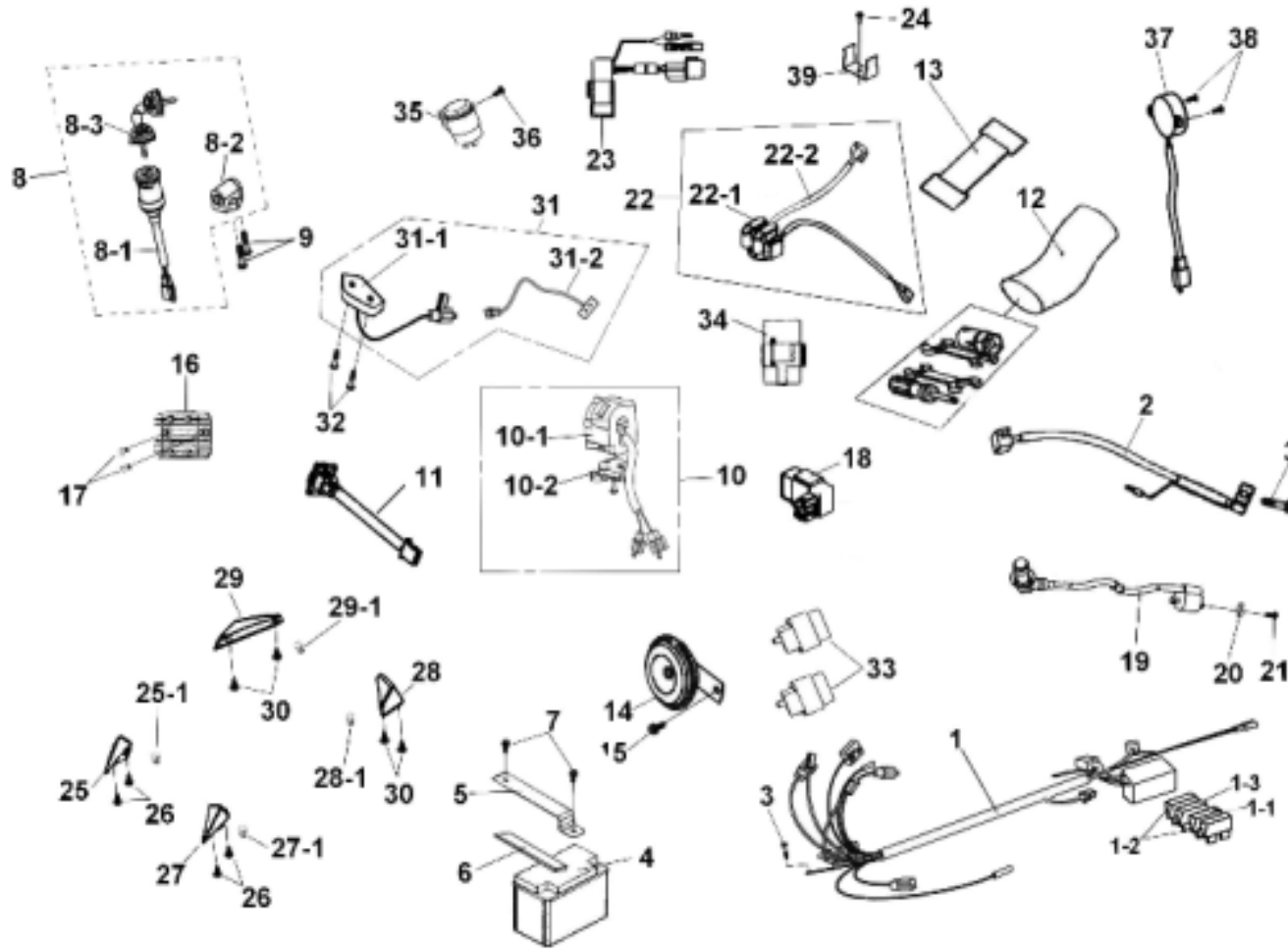


VXL250 VECTOR ST

ITEM	AVAIL	PART NO.	NAME	Q'TY	品名	VIN /ENG NO	E.P	F.R	TORQUE kgf-cm
37			STEERING						
37-1		E3200-LRC0-0000	SHAFT ASSY , STEERING	1	轉向桿總成				
37-2		E3201-5EA0-0000	OIL SEAL(ψ18xψ32x7)	1	油封				
37-3		I3102-5AC0-0000	OIL SEAL(ψ22xψ35x7)	1	油封				
37-4		D4620-5EA0-0000	INNER SPACER	1	內定距套				
37-5		I5611-14200	NUT,FLANGE CHECK(M14)	1	凸緣防鬆螺帽				
37-6		E0258-LRA0-0000	STEERING TIE-ROD ASSY , LEFT	1	轉向拉桿(左)				
37-6-1		E0251-LRA0-0000	BOLT , STUD	1	雙頭牙螺栓				
37-6-2		E0252-5EA0-0000	NUT(R)	1	螺帽(右)				
37-6-3		E0253-5EA0-0000	NUT(L)	1	螺帽(左)				
37-6-4		E0255-LRA0-0000	UNIVERSAL JOINT(L)	1	萬向接頭(左)				
37-6-5		E0256-LRA0-0000	UNIVERSAL JOINT(R)	1	萬向接頭(右)				
37-7		E0205-LRA0-0000	KNUCKLE , LEFT	1	前輪轉向軸(左)				
37-8		E0215-LRA0-0000	KNUCKLE , RIGHT	1	前輪轉向軸(右)				
37-9		G7112-BCA0-0000	BRACKET,BRAKE HOSE	2	煞車油管固定夾				
37-10		I0149-06012	BOLT, FLANGE (M6x12)	2	六角帶頭螺栓M6*12				
37-11		E3209-FIA0-0000	OIL SEAL(ψ31.8xψ37.8x4)	2	油封				
37-12		E3202-FIA0-0000	HOLDER , STEERING SHAFT	2	轉向桿固定環				
37-13		E3203-FIA0-0000	FIX PLATE , STEERING SHAFT	1	轉向桿固定片				
37-14		I0020-08060	BOLT , HEXAGON HEAD(M8X60)	2	六角螺栓(M8×60)				
37-15		E3210-LRB0-0000	HOLDER , STEERING SHAFT PRESSED PLATED	1	轉向桿固定環壓板				
37-16		E3208-FIA0-0000	STEERING , COLLAR	2	固定環隔筒				
37-17		E0259-LRA0-0000	STEERING TIE-ROD ASSY , RIGHT	1	轉向拉桿(右)				
37-17-1		E0251-LRA0-0000	BOLT , STUD	1	雙頭牙螺栓				
37-17-2		E0252-5EA0-0000	NUT (R)	1	螺帽(右)				
37-17-3		E0253-5EA0-0000	NUT (L)	1	螺帽(左)				
37-17-4		E0255-LRA0-0000	UNIVERSAL JOINT(L)	1	萬向接頭(左)				
37-17-5		E0256-LRA0-0000	UNIVERSAL JOINT(R)	1	萬向接頭(右)				
37-18		D4611-9EA0-0000	NUT,FLANGE CHECK	4	凸緣防鬆螺帽				
37-19		I9900-25019	SPLIT PIN	1	開口銷				

VXL250 VECTOR ST

38 ELECTRICAL EQUIPMENT



VXL250 VECTOR ST

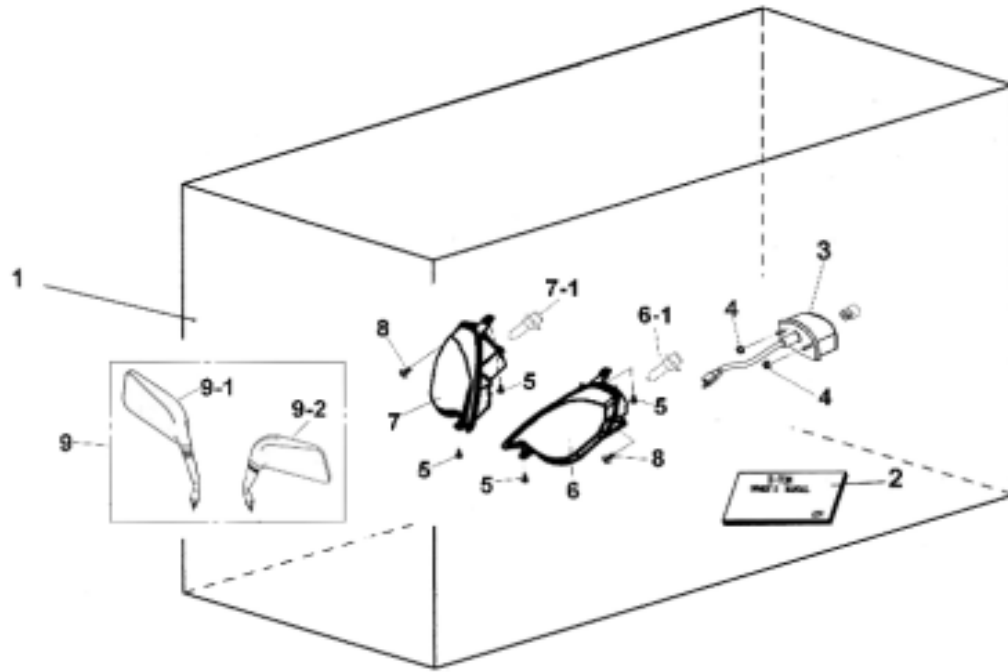
ITEM	AVAIL	PART NO.	NAME	Q'TY	品名	VIN /ENG NO	E.P	F.R	TORQUE kgf-cm
38			ELECTRICAL EQUIPMENT						
38-1		C2100-LRC0-0000	WIRE HARNESS	1	主配線				
38-1-1		C2010-GJA0-0000	FUSE(10A)	1	保險絲10A				
38-1-2		C2011-GJA0-0000	FUSE(15A)	2	保險絲15A				
38-1-3		C2013-LRA0-0000	FUSE(30A)	1	保險絲30A				
38-2		C2102-LRA0-0000	EARTH CABLE	1	負極高壓導線				
38-3		I0153-06012	SCREW(M6×12)	2	破壞螺絲				
38-4		C1500-LRA0-0000	BATTERY ASSY. (12AH)	1	電瓶				
38-5		C1502-LRA0-0000	BATTERY BAND	1	電瓶固定片				
38-6		A7509-FID0-0000	LH. BACK MIRROR ASSY	1	橡膠海綿條				
38-7		I0149-06012	BOLT, FLANGE (M6x12)	2	凸緣螺栓(M6×12)				
38-8		C501A-LRC0-0000	MAIN SWITCH ASSY.	1	主開關總成				
38-8-1		C5010-LRA0-0000	MAIN SWITCH	1	主開關				
38-8-2		C5011-FIC0-0000	FAUCET LOCK	1	龍頭鎖				
38-9		I8501-5BA1-0000	BOLT,BROKENABLE	2	斷頭螺絲				
38-10		C5200-LRC0-0000	LEVER HOLDER ASSY., LEFT	1	左把手開關				
38-10-1		C5201-LRC0-0000	LEVER HOLDER , LEFT	1	左把手開關				
38-10-2		C5202-5EE0-0000	AIR CUT,LEVER	1	阻風門拉桿				
38-11		C1802-FIB0-0000	DC POWER OUTLET	1	電源供應座				
38-12		H9020-FIA0-0000	TOOL PACK	1	工具包				
38-13		H9021-9FA0-0000	BINDER CLAMP,TOOL BOX	1	工具包固定束帶				
38-14		C8110-GJA0-0000	HORN	1	喇叭				
38-15		I0149-08012	SCREW , PAD NEAD(M8x12)	1	凸緣螺絲				
38-16		C1600-LRA0-0000	REG. REC. COMP.	1	穩壓整流器				
38-17		I0149-06016	BOLT, FLANGE (M6x16)	2	凸緣螺栓(M6*16)				
38-18		C0410-LRA0-0000	CDI UNIT ASS'Y	1	CDI . UNIT				
38-19		C051A-LRA0-0000	IGN COIL ASS'Y	1	高壓點火線圈				
38-20		I2140-60001	WASHER	1	高壓線圈墊片				
38-21		I0020-05024	BOLT(M5x24)	1	螺栓				

VXL250 VECTOR ST

ITEM	AVAIL	PART NO.	NAME	Q'TY	品名	VIN /ENG NO	E.P	F.R	TORQUE kgf-cm
38			ELECTRICAL EQUIPMENT						
38-22		C585A-LRA0-000C	START MAG. SW. SET	1	起動繼電器總成				
28-22-1		C5850-LRA0-0000	START RELAY	1	起動繼電器				
28-22-2		C2101-LRA0-0000	POSITIVE CABTE	1	正極線				
38-23		C576A-LRA0-000C	SHIFT GEAR CONTROL UNIT ASS'Y	1	排檔燈號控制器				
38-24		I7701-50016	HOLDER RELAY	1	自攻螺絲(M5×16)				
38-25		C3401-LRC0-0000	TURN LAMP ASSY F.R	1	右前方向燈組				
38-25-1		F1231-FIC0-0000	BULB	1	燈泡				
38-26		I7701-50016	SCREW M5x12	4	自攻M5*12L				
38-27		C3451-LRC0-0000	TURN LAMP ASSY F.L	1	左前方向燈組				
38-27-1		F1231-FIC0-0000	BULB	1	燈泡				
38-28		F1240-LRC0-0000	TURN LAMP ASSY R.L	1	左後方向燈組				
38-28-1		F1231-5FA0-0000	BULB	1	燈泡				
38-29		F1230-LRC0-0000	TURN LAMP ASSY R.R	1	右後方向燈組				
38-29-1		F1231-5FA0-0000	BULB	1	燈泡				
38-30		I3903-312B0	TRUSS	4	NO:009十字自攻螺絲				
38-31		C7200-LRA0-0000	SPEEDOMETER ASSY	1	碼錶總成				
		C7200-LRA9-0000	SPEEDOMETER ASSY	1	碼錶總成(英哩)				
38-31-1		C7201-LRA0-0000	SPEEDOMETER	1	碼錶				
38-31-2		C7207-FIC0-9000	SPEEDOMETER	1	碼錶感應組				
38-32		I8506-05010	SCREW	2	十字槽圓頭機器螺絲				
38-33		C850A-LRA0-000C	ELEC.RELAY ASSY	2	大燈繼電器組				
38-34		C872A-LRA0-000C	HAZARD CONTROL NUIT ASSY	1	方向燈控制器總成				
38-35		C8301-LRA0-0000	WINKER RELAY COMP	1	閃光器				
38-36		I0149-06012	BOLT, FLANGE (M6x12)	1	凸緣螺栓				
38-37		C8400-EMA0-0000	BUZZER	1	蜂鳴器				
38-38		I2600-03012	SCREW M3x12	2	十字平頭螺絲				
38-39		80109-RB1-0000P	MAG.STAY	1	繼電器固定座				

VXL250 VECTOR ST

39 PACKING CASE,EXTERNAL



VXL250 VECTOR ST

ITEM	AVAIL	PART NO.	NAME	Q'TY	品名	VIN /ENG NO	E.P	F.R	TORQUE kgf-cm
39			PACKING CASE,EXTERNAL		包裝外箱				
39-1		H9500-LRA0-0000	PACKING CASE,EXTERNAL	1	包裝外箱				
39-2		H9900-LRC0-0000	OWNER'S MANUAL	1	使用手冊				
39-3		C5031-LRA0-0000	TAIL LIGHT	1	後煞車燈				
39-4		I5611-06200-0G	NUT	2	自鎖螺帽(墨綠)				
39-5		I7701-50016	RH. BACK MIRROR ASSY	4	自攻螺絲				
39-6		C5020-LRC0-0000	HEAD LIGHT ASSY.,LEFT	1	左頭燈總成				
39-6-1		C5003-LRA0-0000	BULB	1	頭燈燈泡				
39-7		C5030-LRC0-0000	HEAD LIGHT ASSY.,RIGHT	1	右頭燈總成				
39-7-1		C5003-LRA0-0000	BULB	1	頭燈燈泡				
39-8		E0117-9EA0-0000	SCREW,BUTTON HEAD (M6×18)	2	扁圓頭螺絲				
39-9		H8100-LRC0-0000	BACK MIRROR ASSY	1	後視鏡總成(DOT)				
39-9-1		H8110-LRC0-0000	REAR VIEW MIRROR ASSY,R	1	右後視鏡				
39-9-2		H8120-LRC0-0000	REAR VIEW MIRROR ASSY,L	1	左後視鏡				
39-10		H9905-LRC0-0000	CERTIFICAT OF ORIGIN	1	出廠證明				

VXL250 VECTOR ST

ITEM	AVAIL	PART NO.	NAME	Q'TY	品名	VIN /ENG NO	E.P	F.R	TORQUE kgf-cm
40			ACCESSORIES						
40-1		E041C-LRC0-0000	VEHICLE A HOOK ASSY	1	拖車勾總成				
40-1-1		E0418-LRA0-0000	VEHICLE A HOOK	1	拖車勾				
40-1-2		I0149-10030	BOLT,FLANGE(M10x30)	2	凸緣螺栓(M10x30)				
40-2		H7118-FIB0-0000	STICKER WARING		拖車勾貼紙			N/A	
		H7118-FIBF-0000	STICKER WARING		拖車勾貼紙			N/A	
40-3		H7110-LRCF-0000	STICKER ,DEALER		經銷商貼紙			N/A	

VXL250 VECTOR ST

ITEM	AVAIL	PART NO.	NAME	Q'TY	品名	VIN/ENG NO	E.P	F.R	TORQUE kgf-cm
41			SERVICE KITS,BRAKE CALLIPER						
41-1		G7137-5EE0-0000	SERVICE KITS,BRAKE CALLIPER	1	煞車卡鉗小修包				
41-1-1		G7134-5EE0-0000	RING,SEAL	1	油封圈				
41-1-2		G7135-5EE0-0000	RING,DUST RESISTANT	1	防塵圈				
41-1-3		G7136-5EE0-0000	PISTON,BRAKE CALLIPER	1	活塞				